

# 2026年島根県東部の地震(MJ6.4, MW5.7)

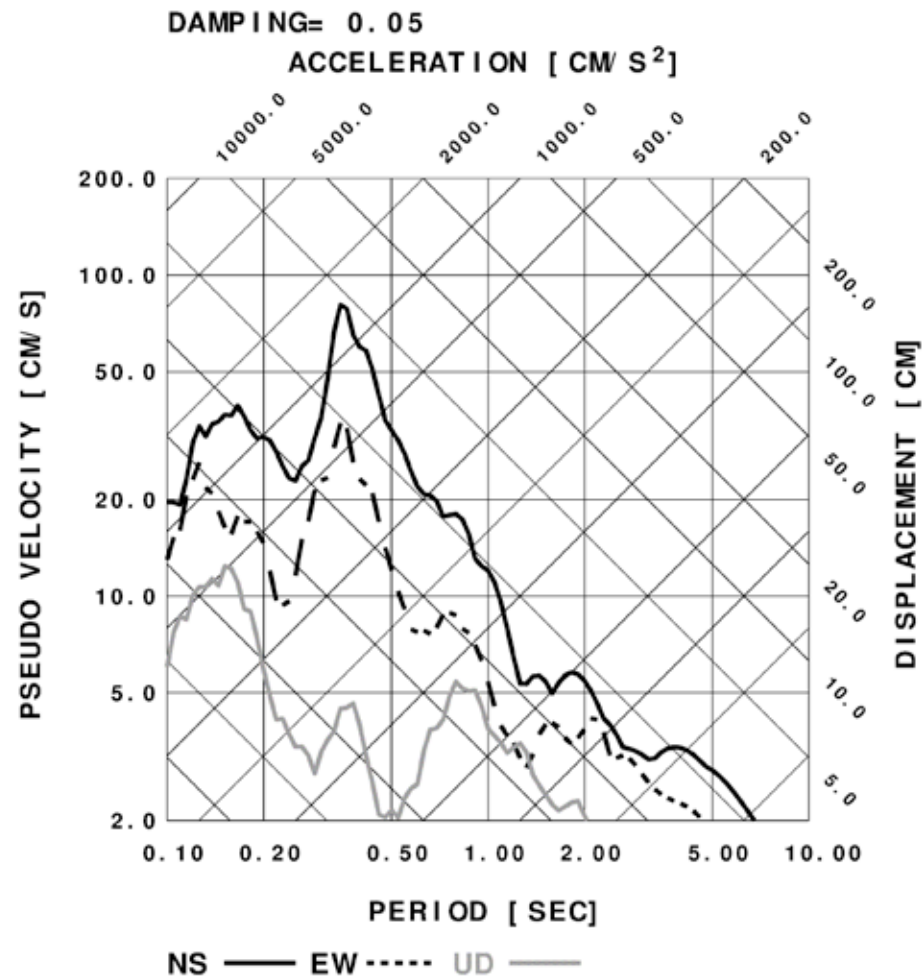
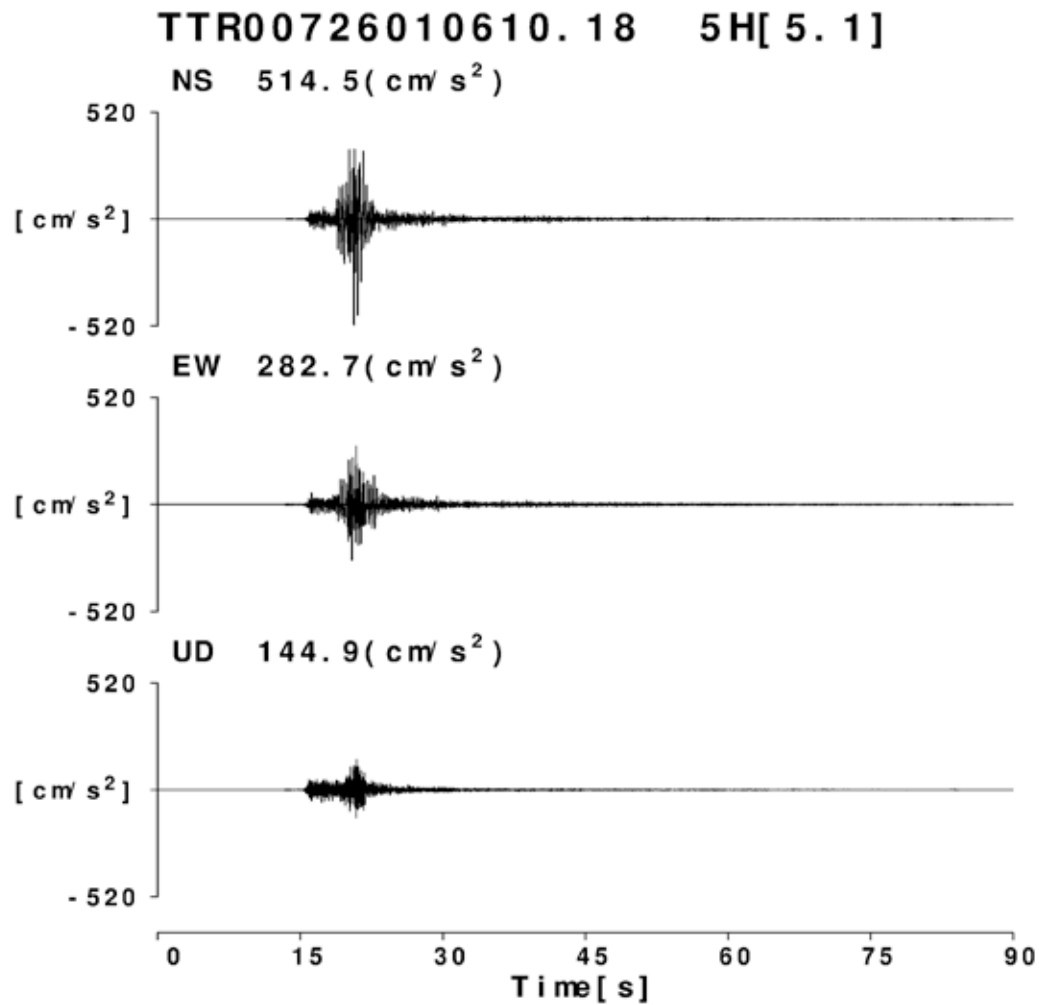
## 震源近傍域の強震波形及び応答スペクトル

鳥取大学工学部 附属地域安全工学センター

香川 敬生

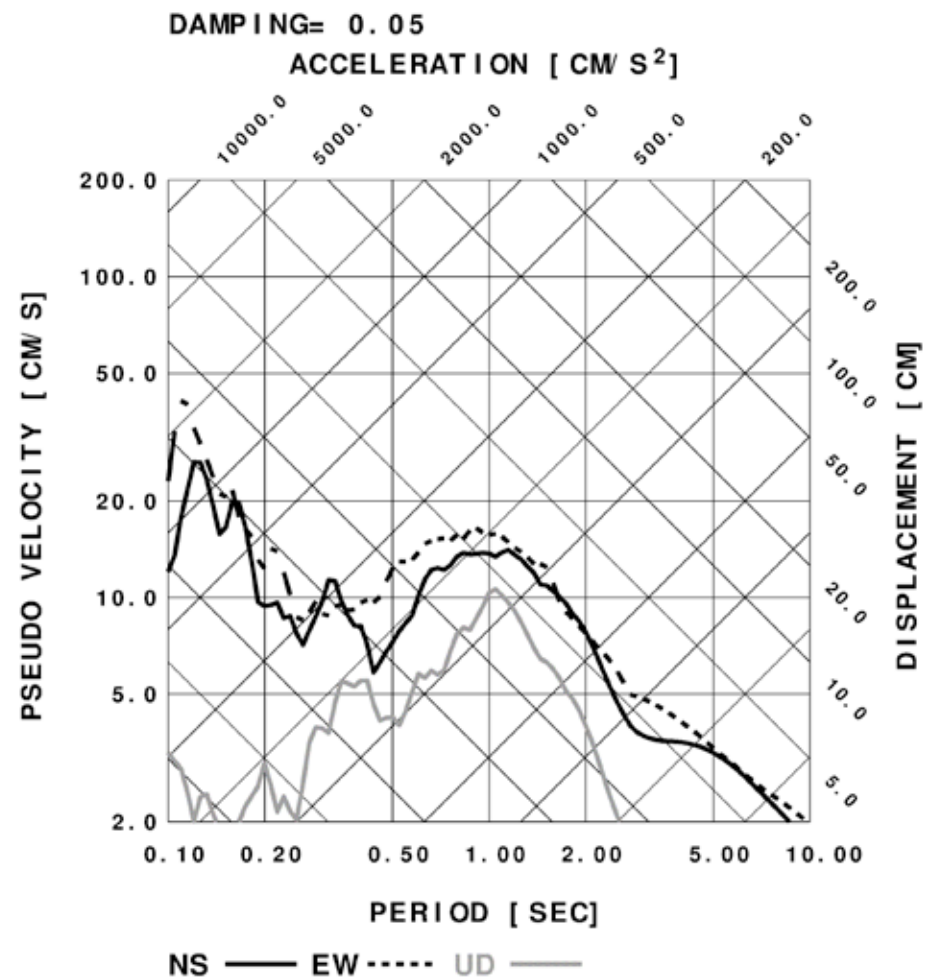
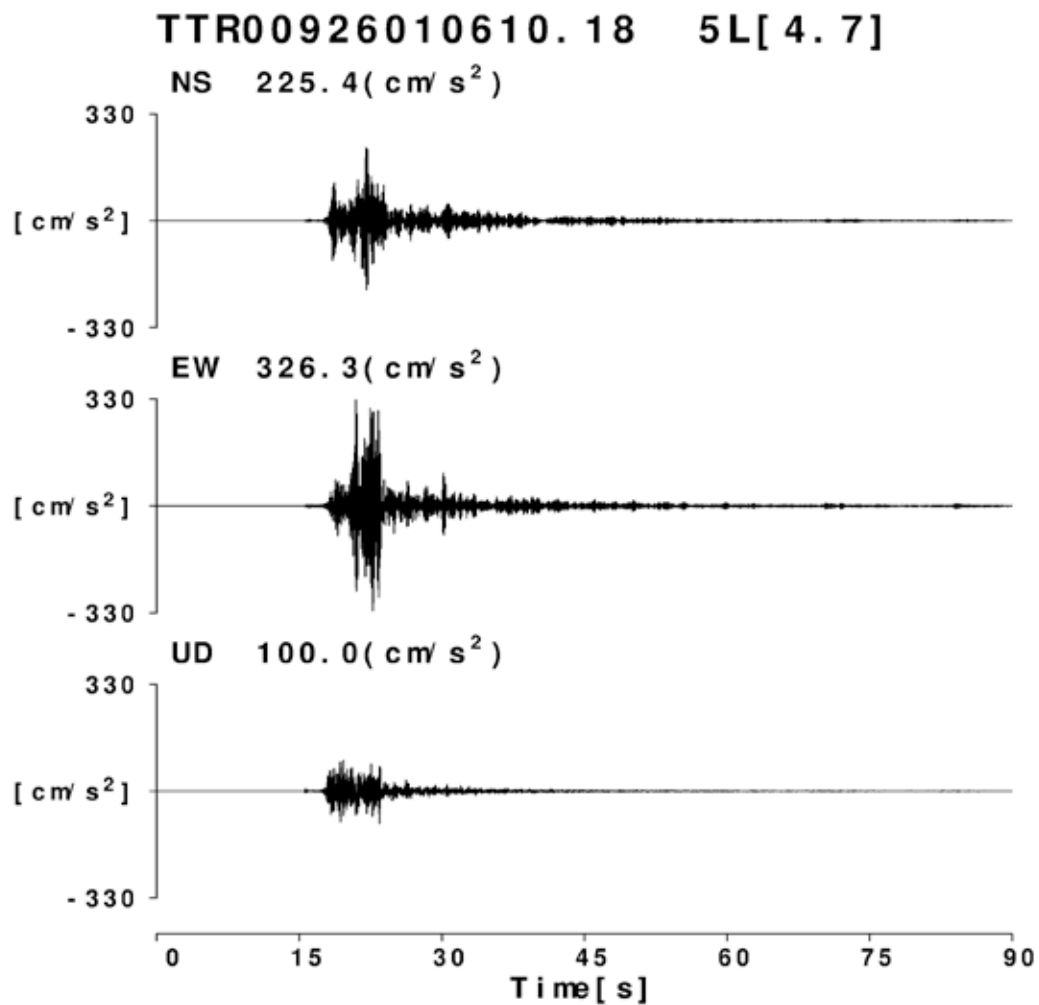
# (国研)防災科学技術研究所 K-NET

## 江府(TTR007)

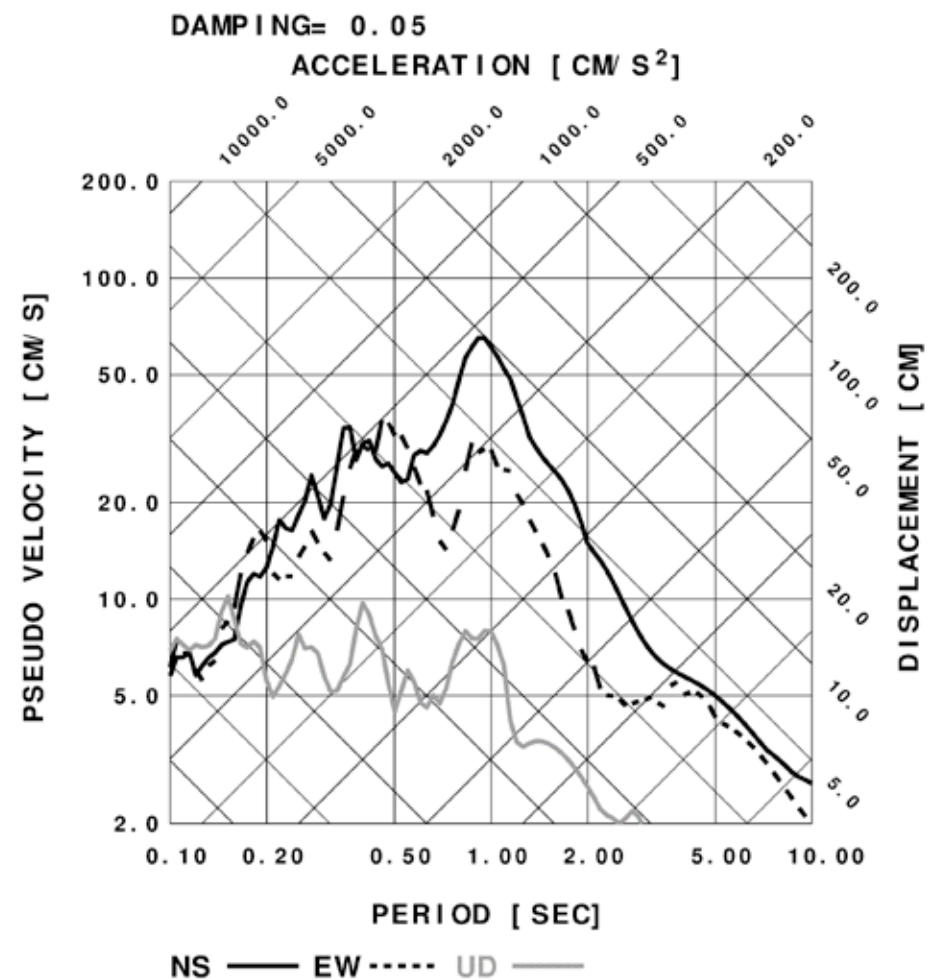
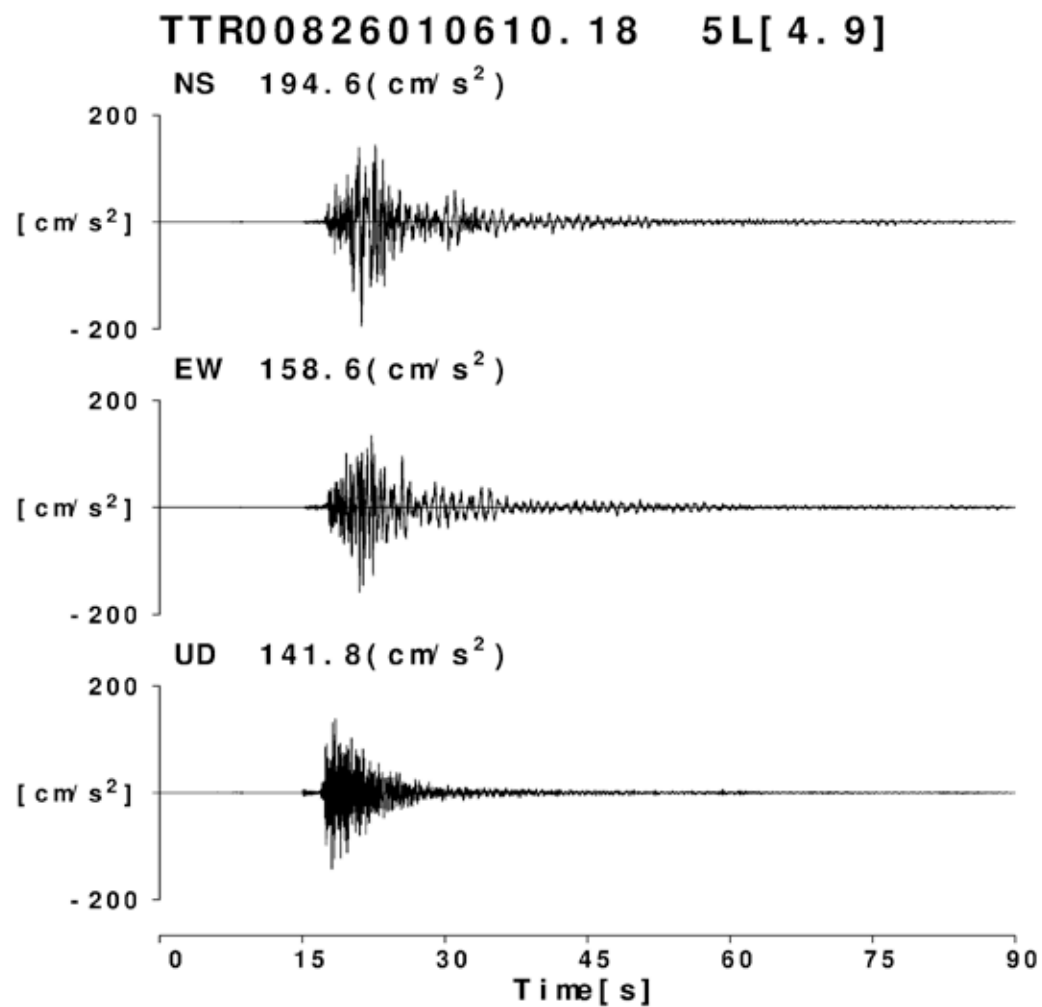


# (国研)防災科学技術研究所 K-NET

## 日南(TTR009)

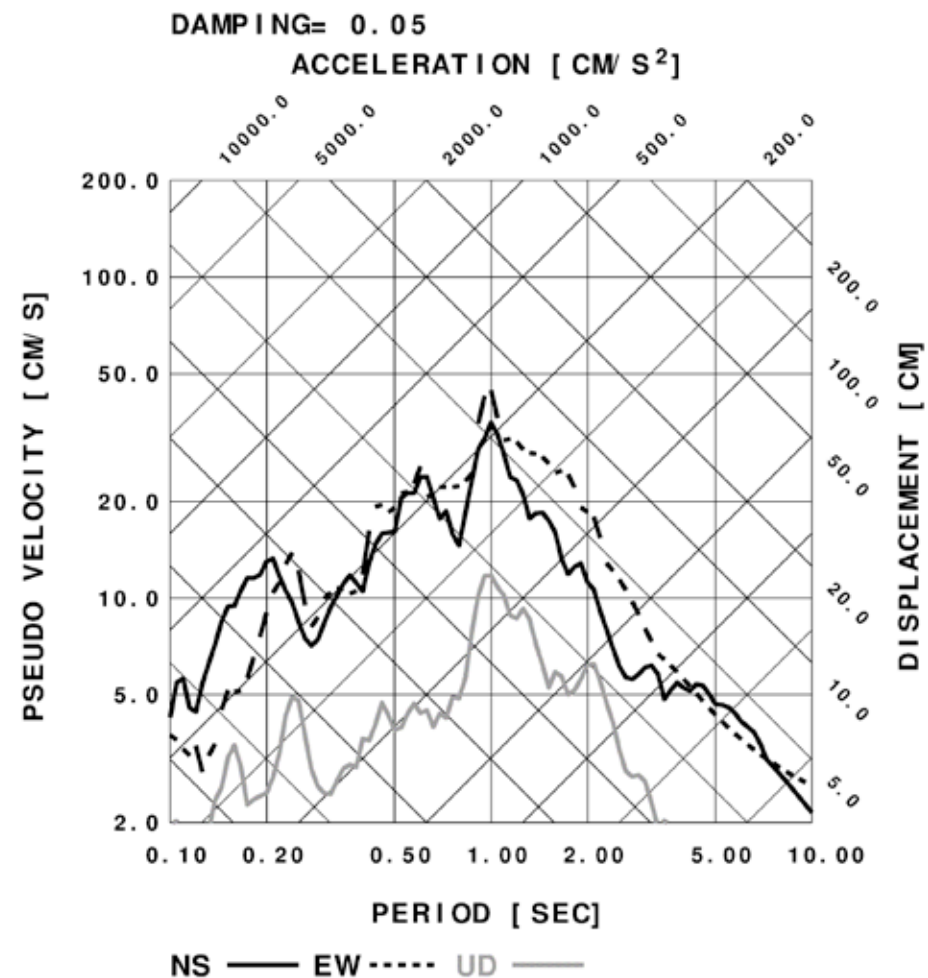
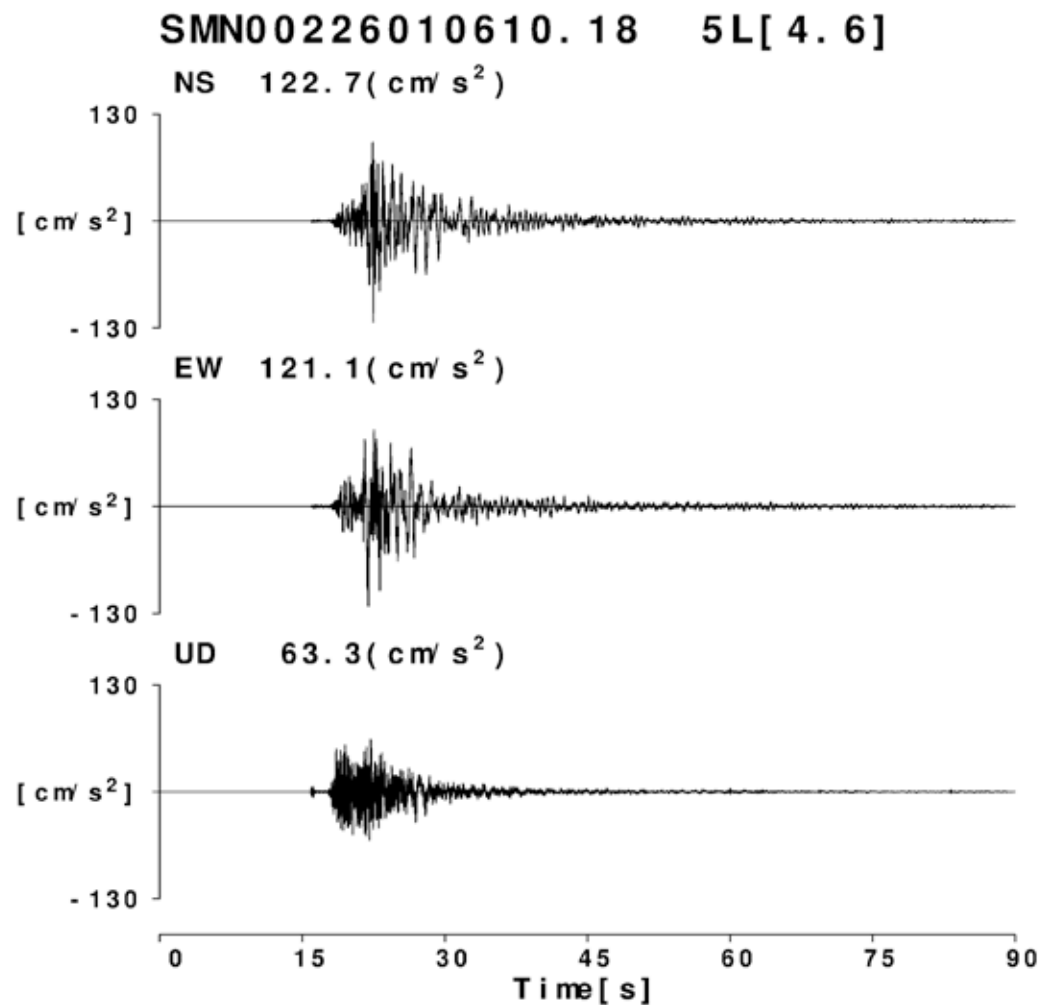


# (国研)防災科学技術研究所 K-NET 米子(TTR008)



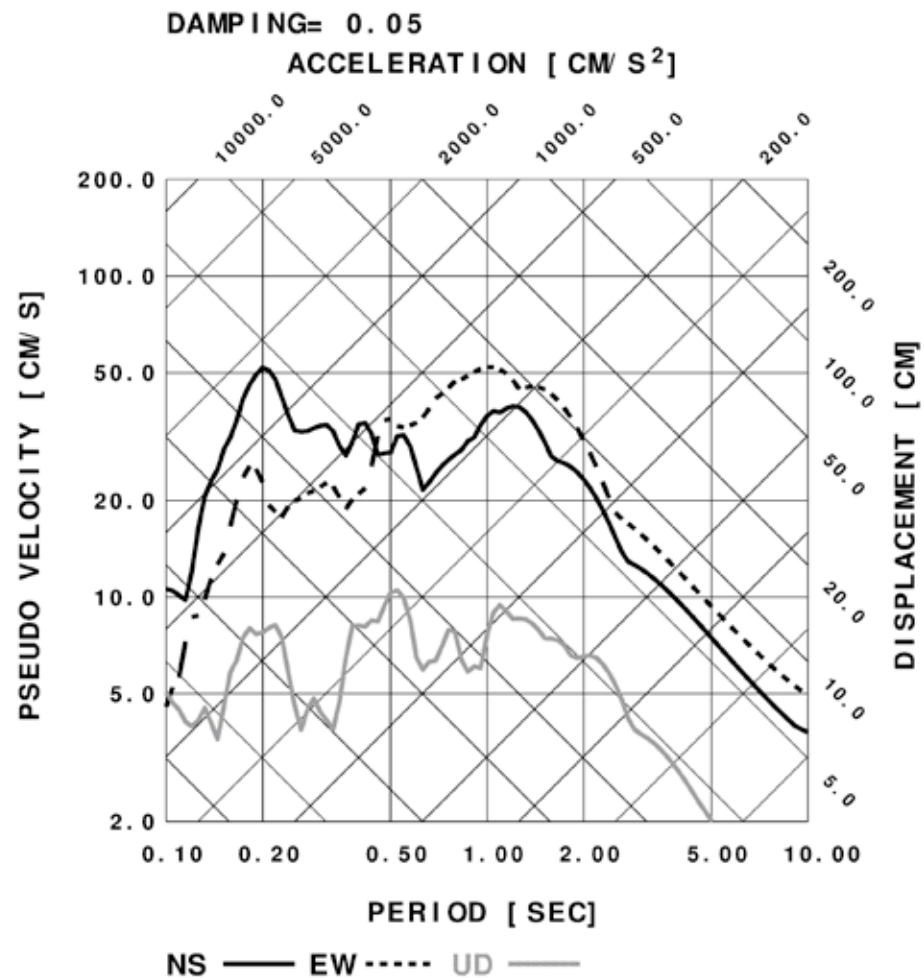
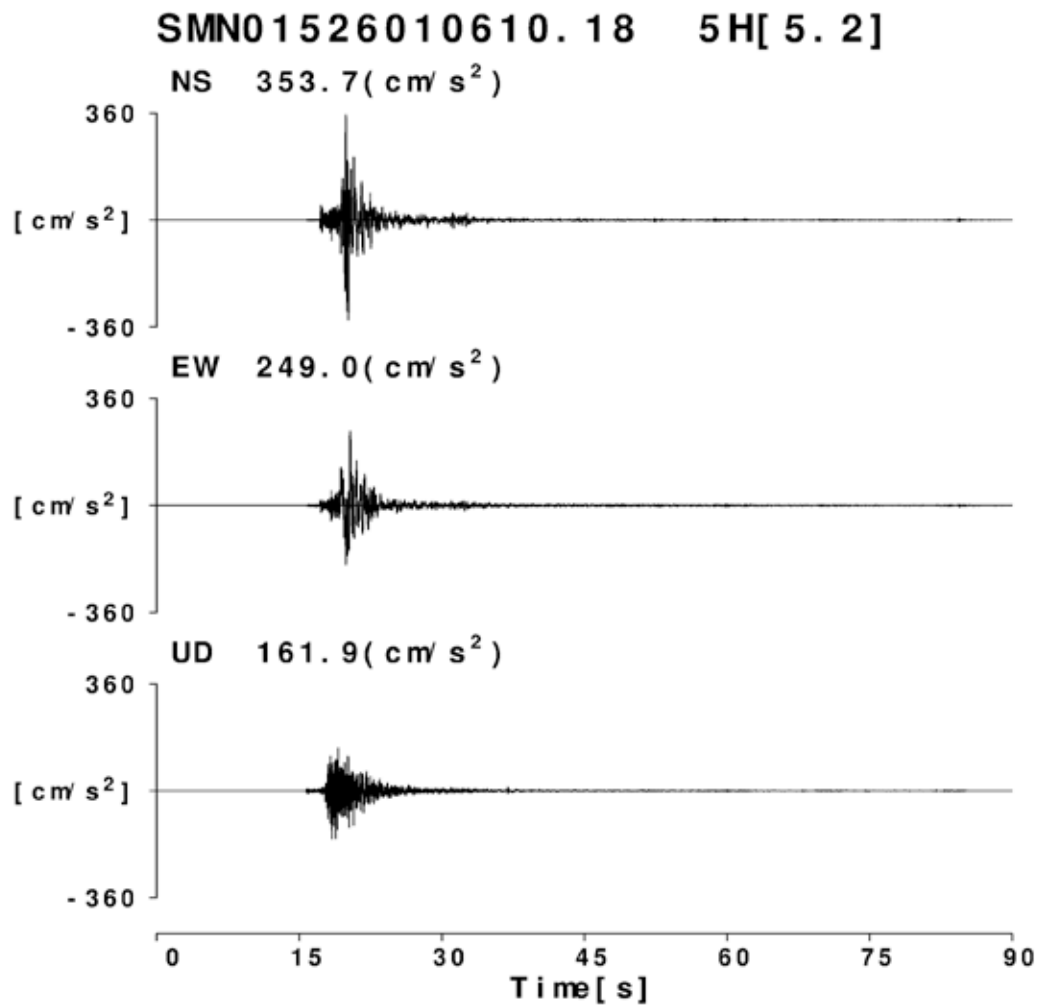
# (国研)防災科学技術研究所 K-NET

## 松江(SMN002)



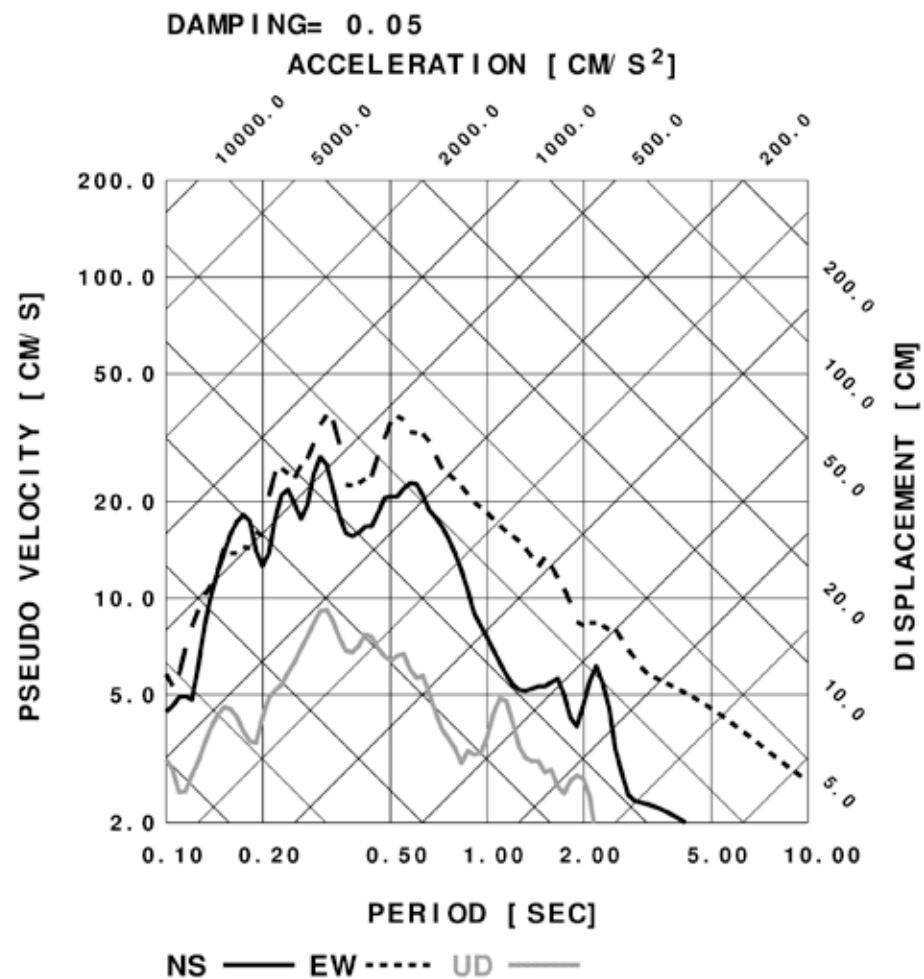
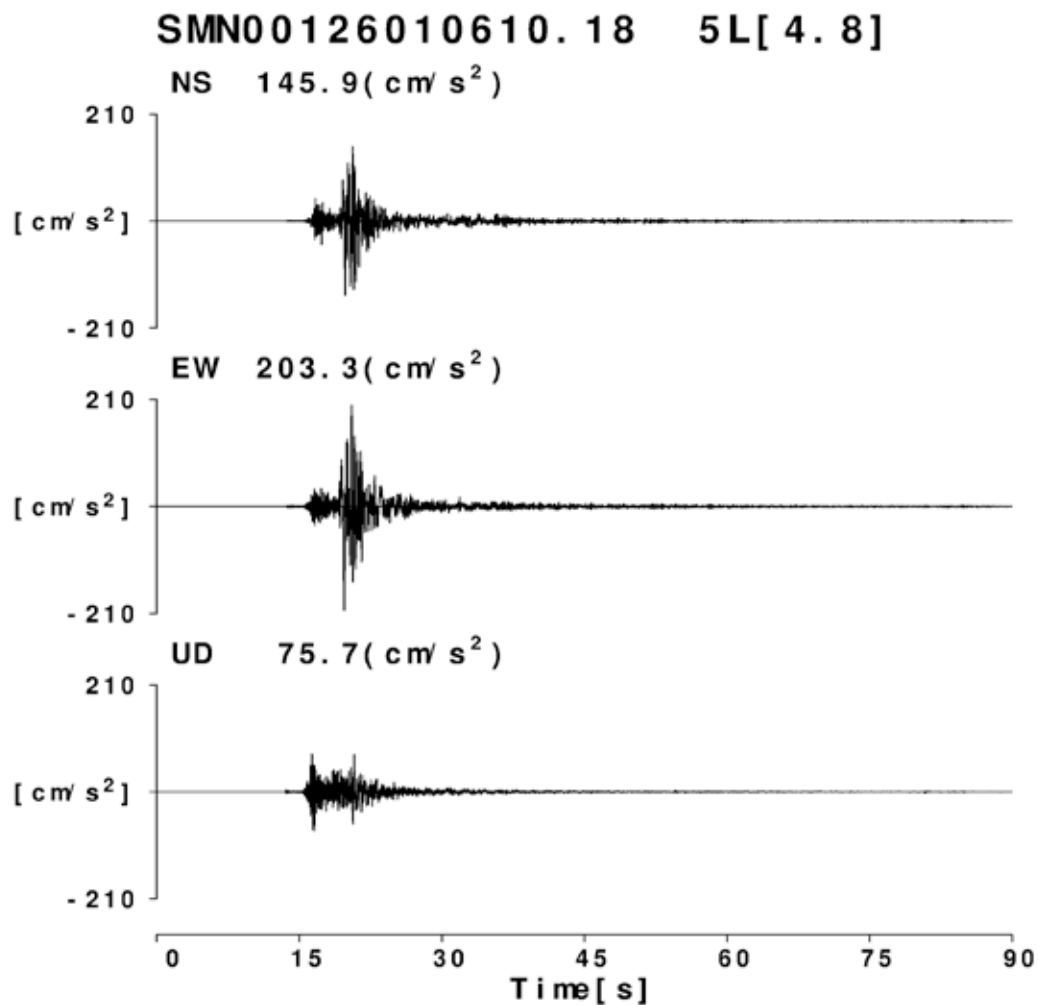
# (国研)防災科学技術研究所 K-NET

## 広瀬(SMN015)



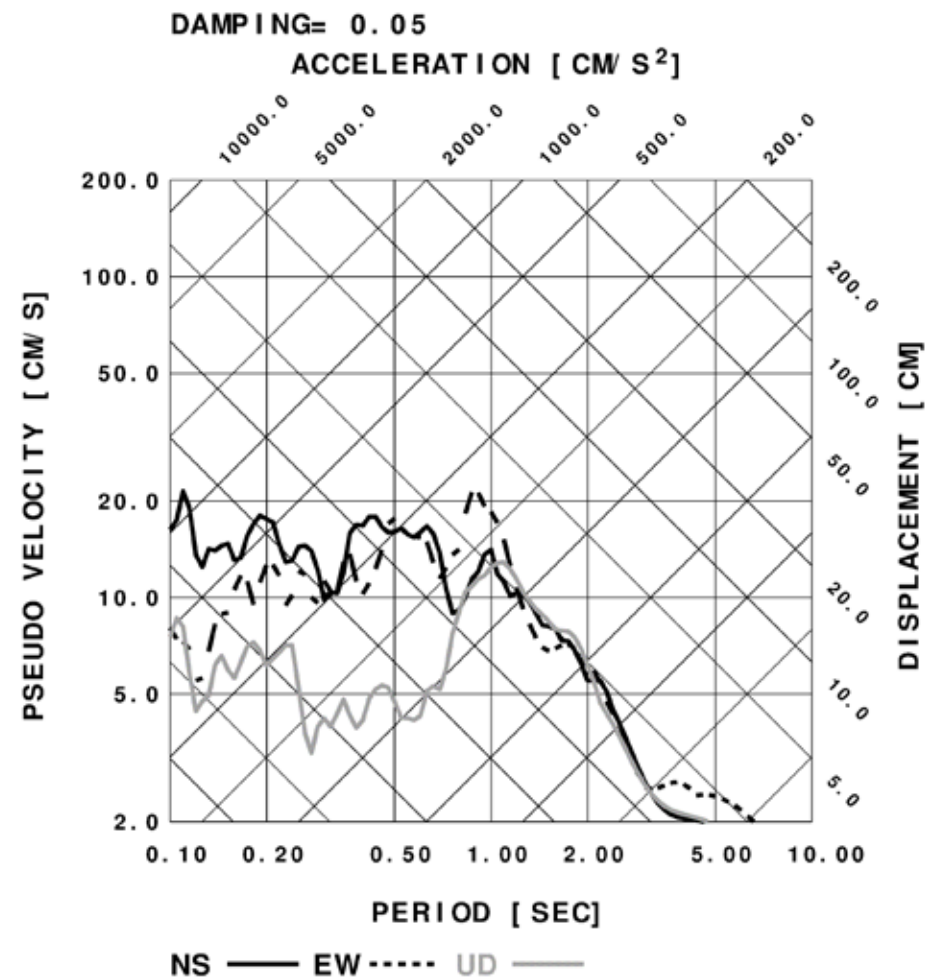
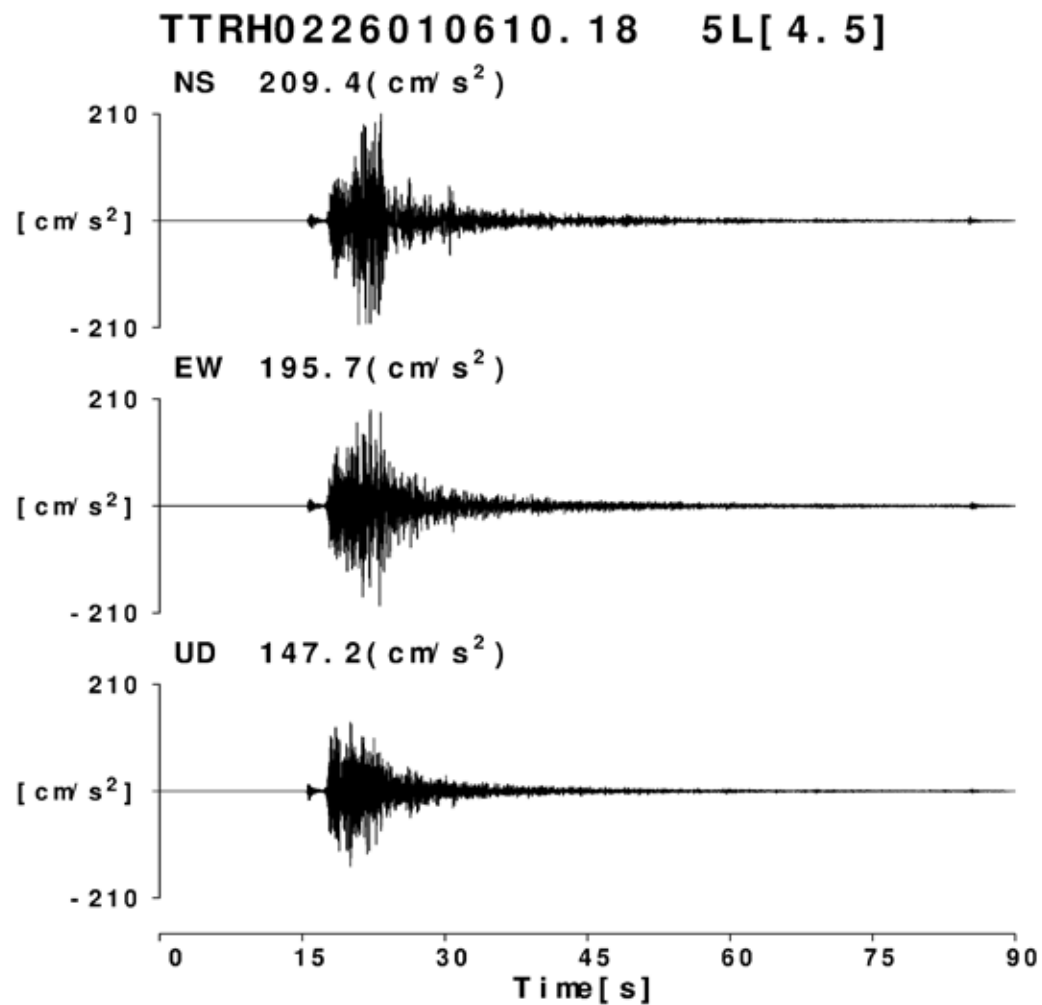
# (国研)防災科学技術研究所 K-NET

## 美保関(SMN001)



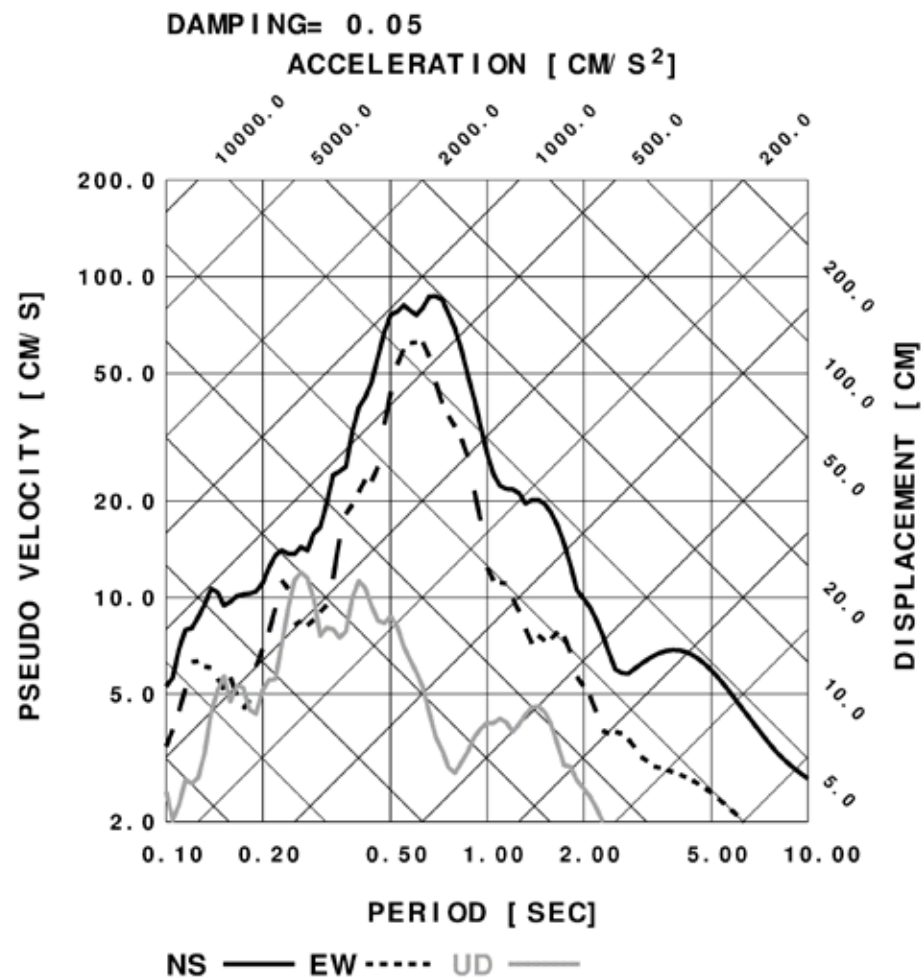
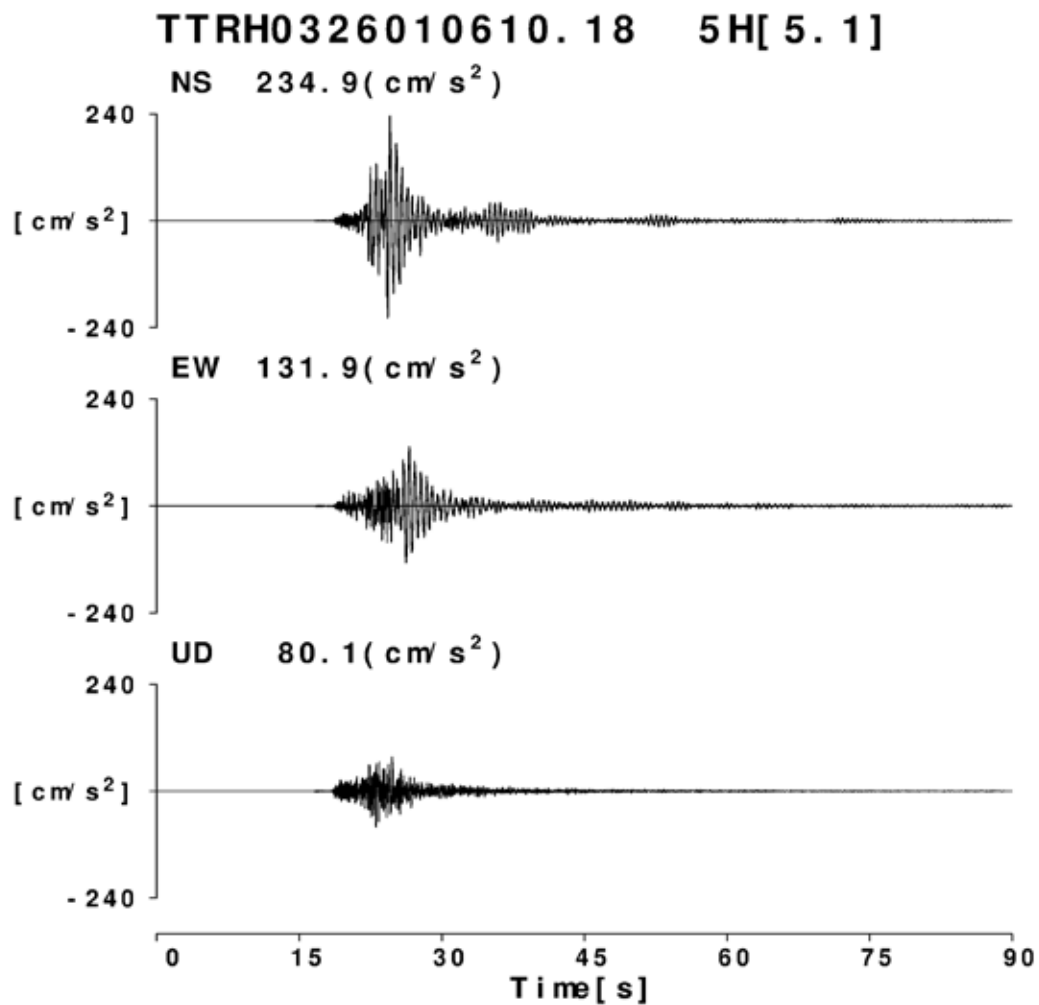
# (国研)防災科学技術研究所 KiK-NET

## 日野(TTRH02)



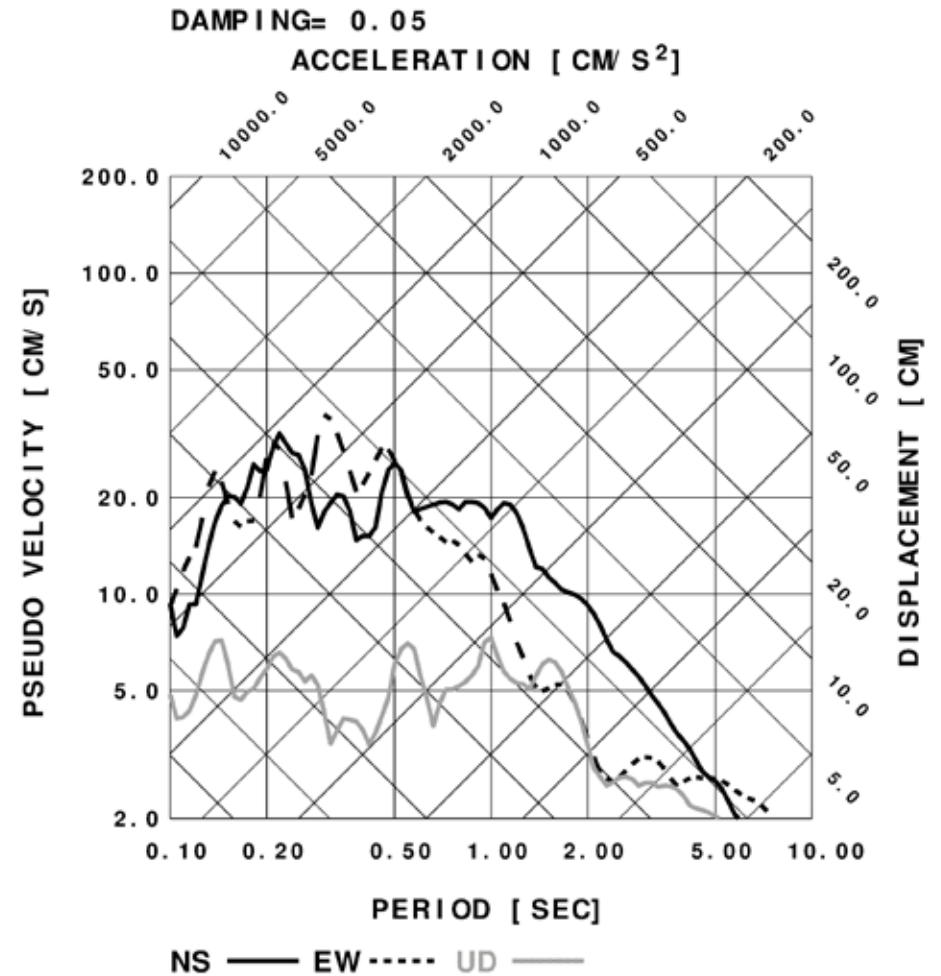
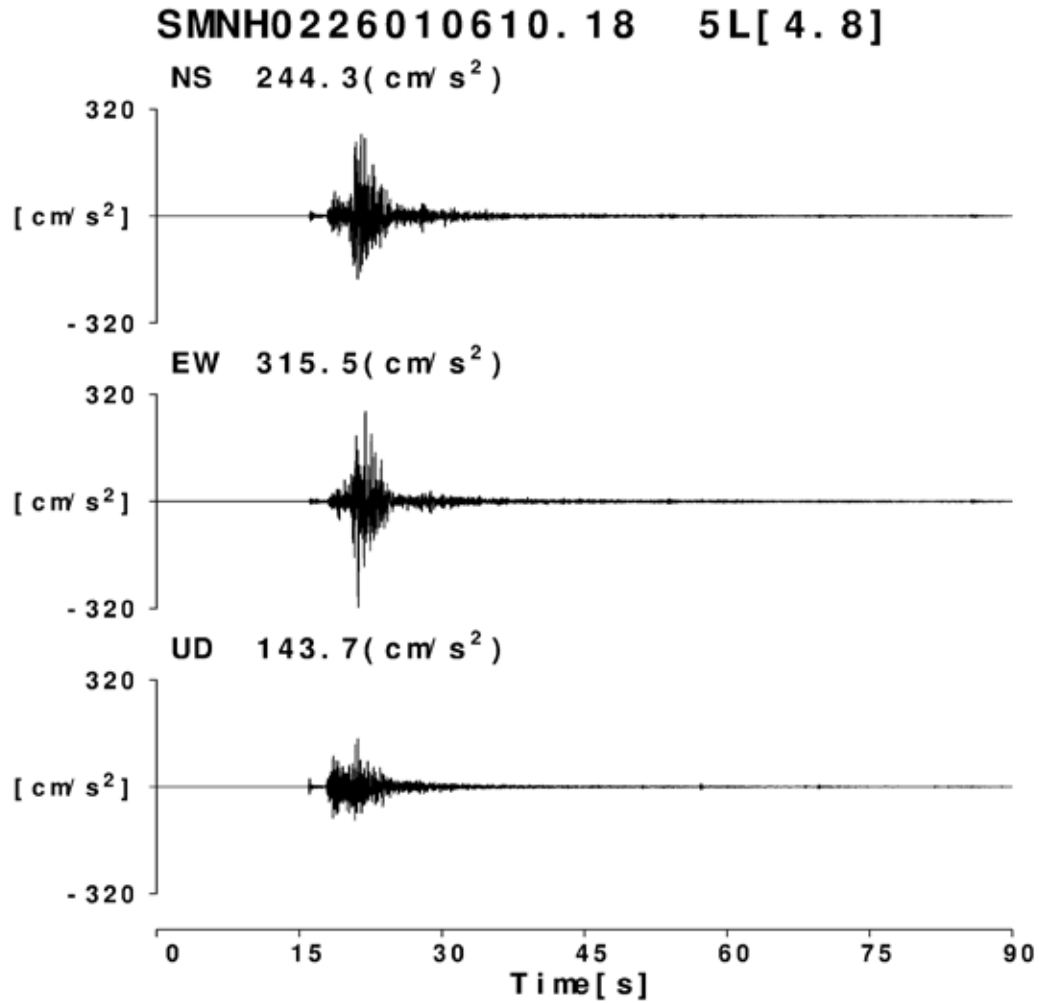
# (国研)防災科学技術研究所 KiK-NET

## 溝口(TTRH03)



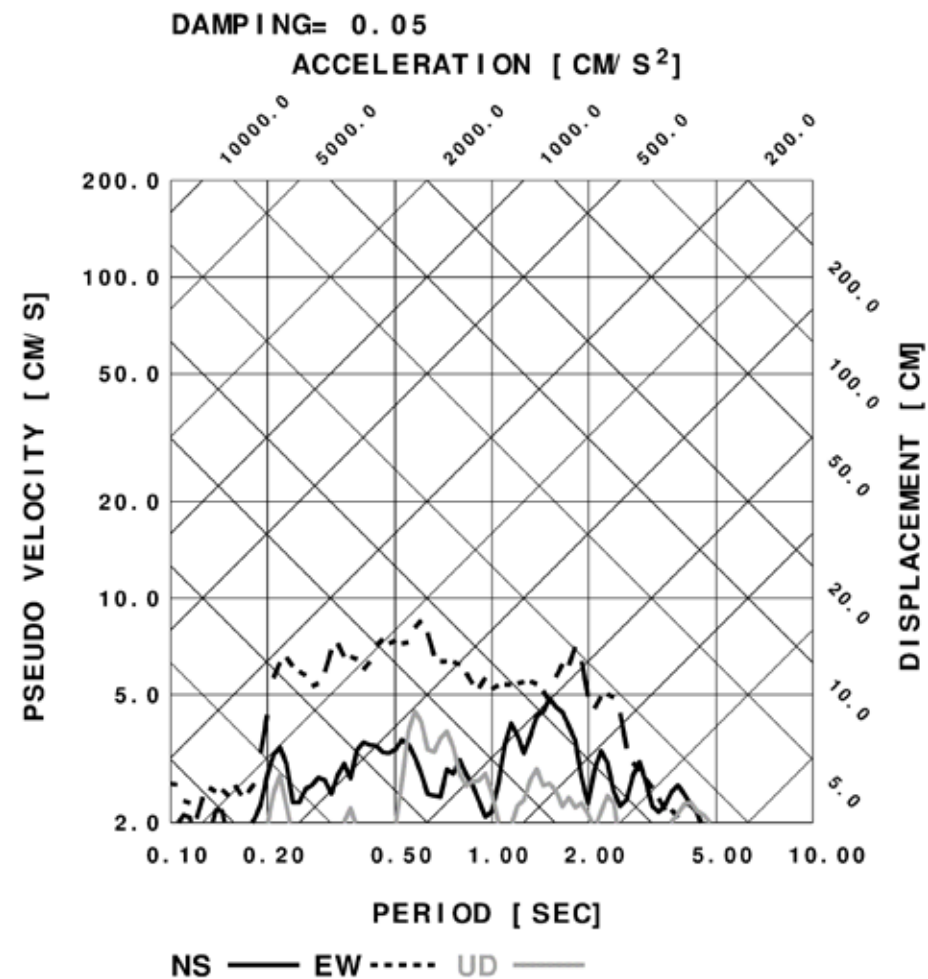
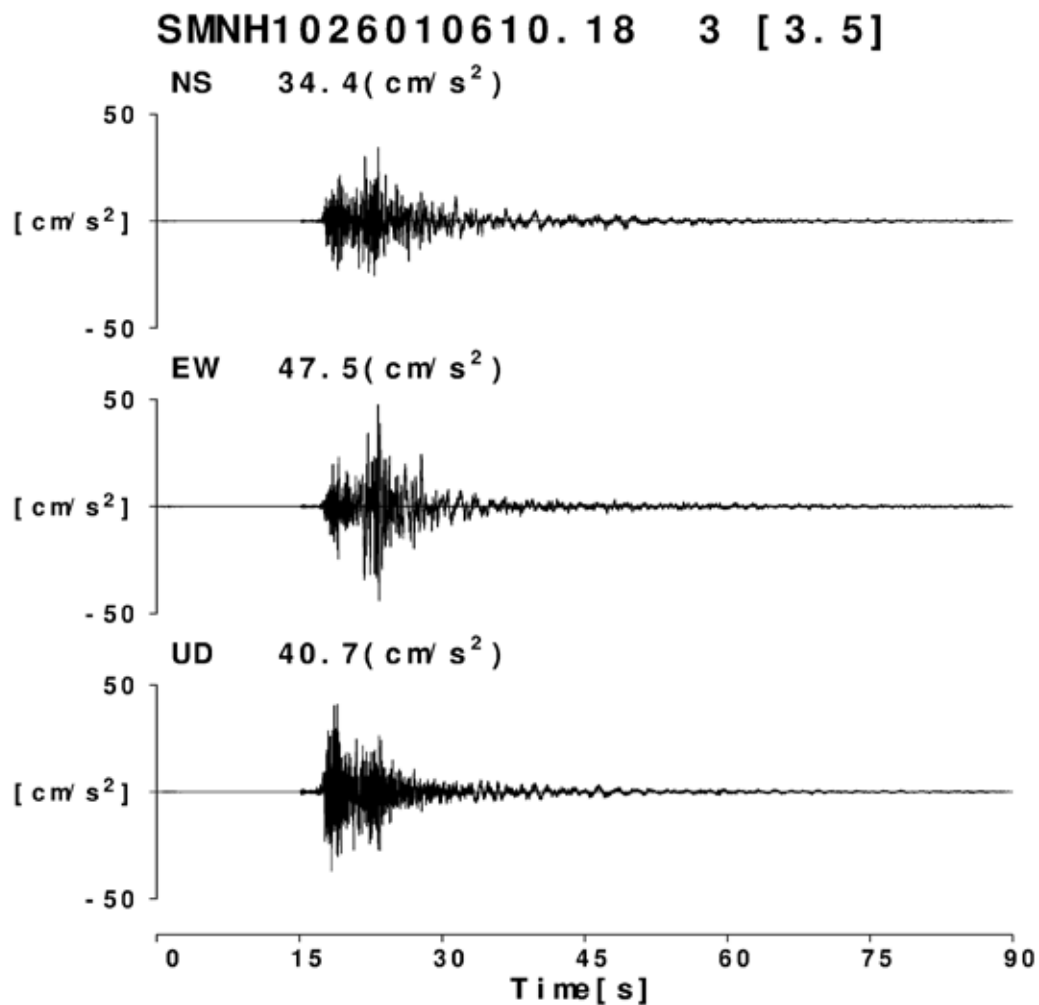
# (国研)防災科学技術研究所 KiK-NET

## 仁多(SMNH02)



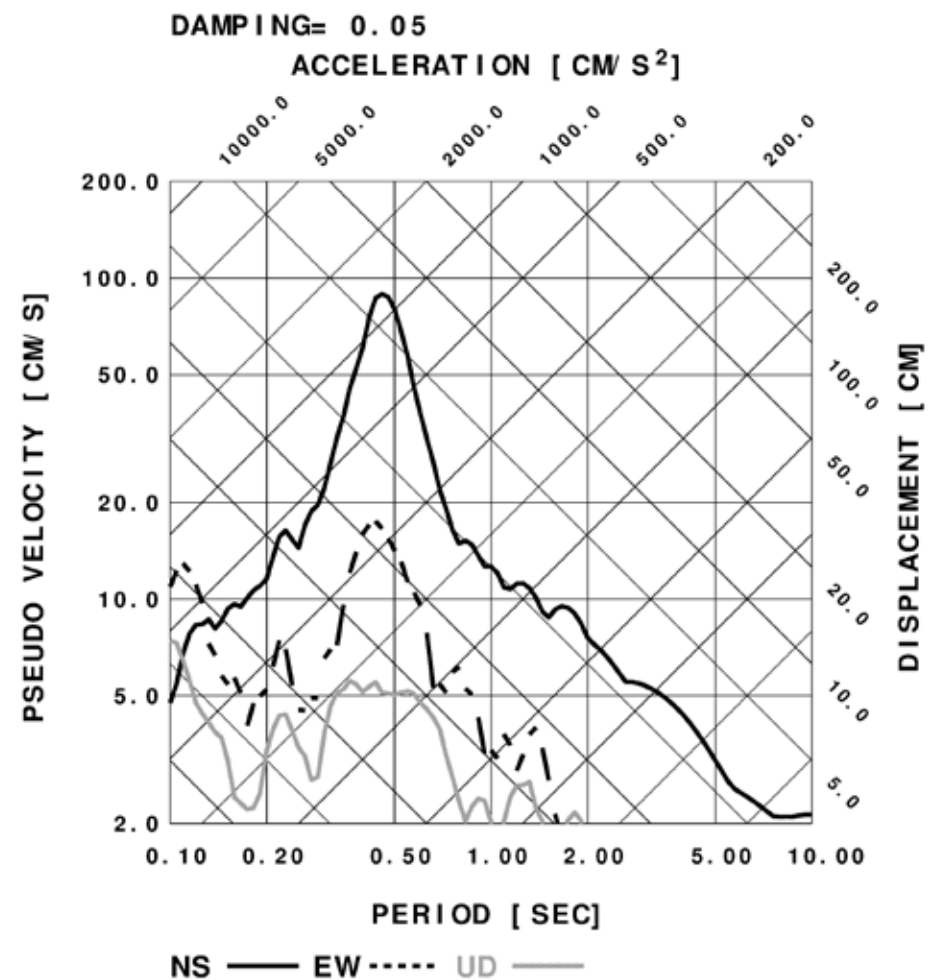
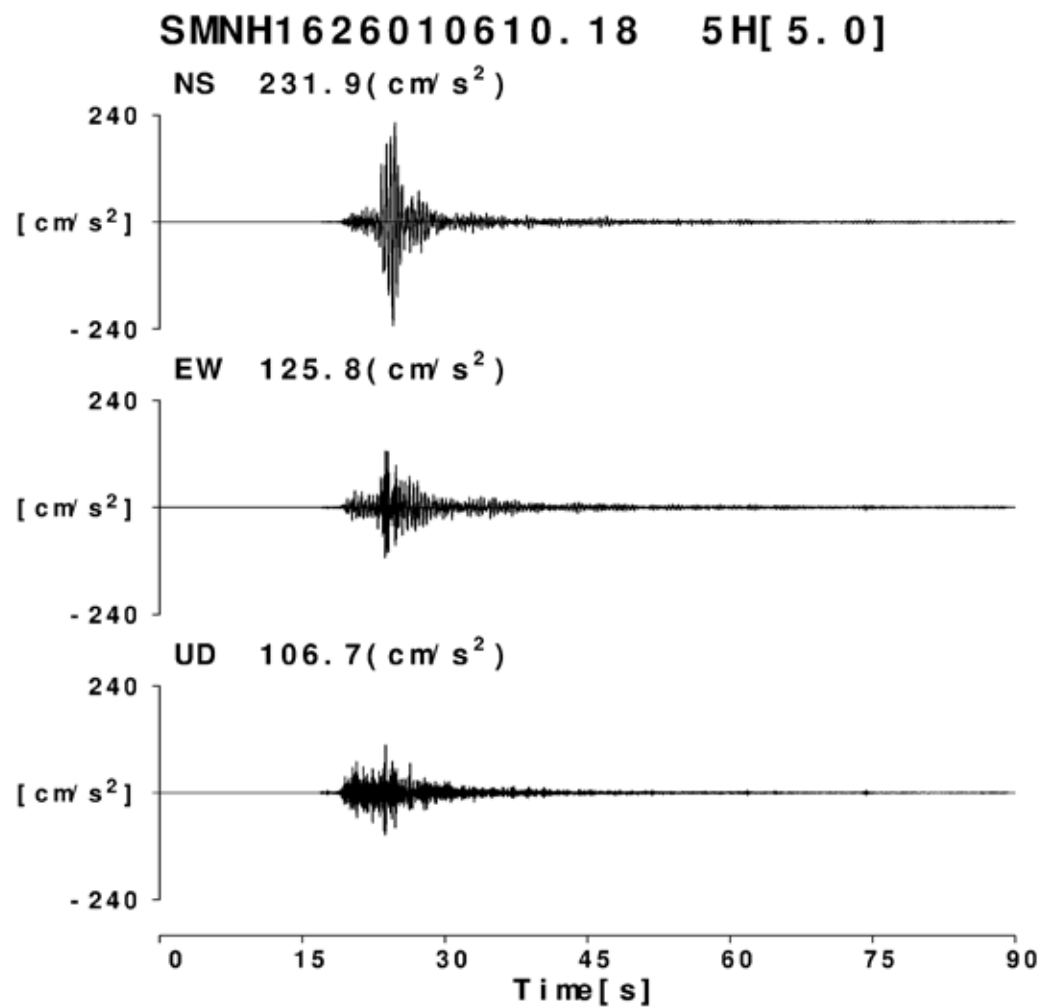
# (国研)防災科学技術研究所 KiK-NET

## 美保関(SMNH10)



# (国研)防災科学技術研究所 KiK-NET

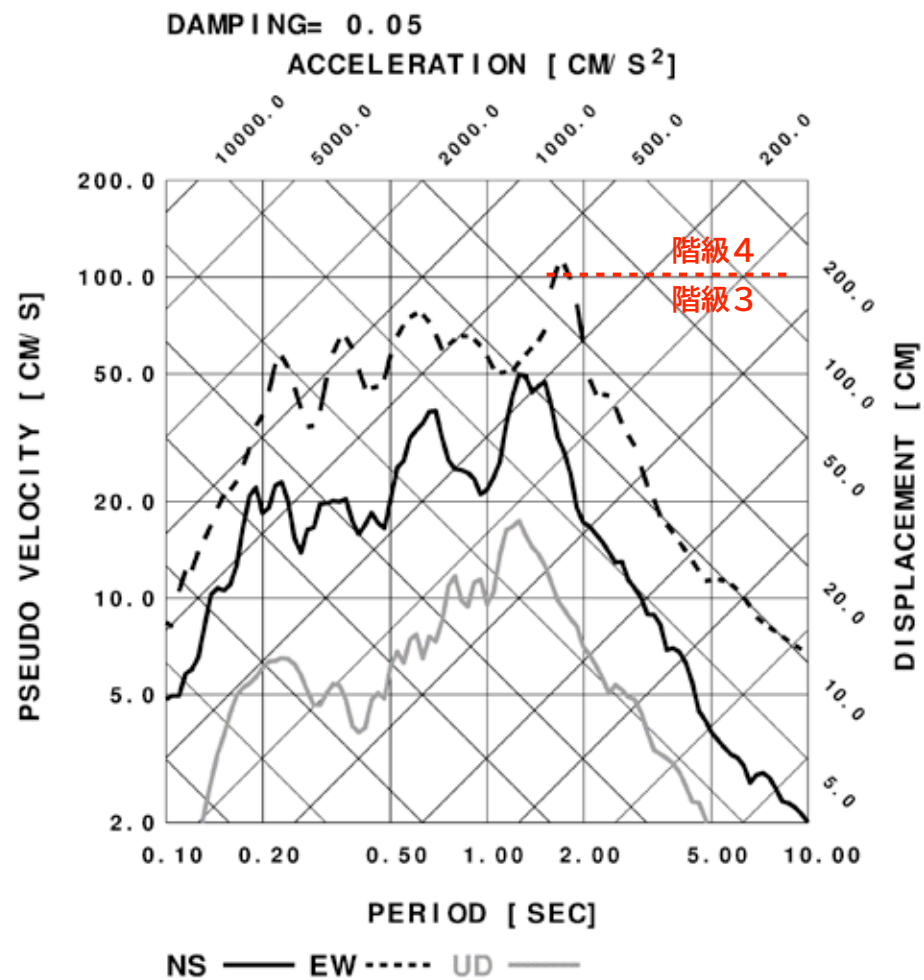
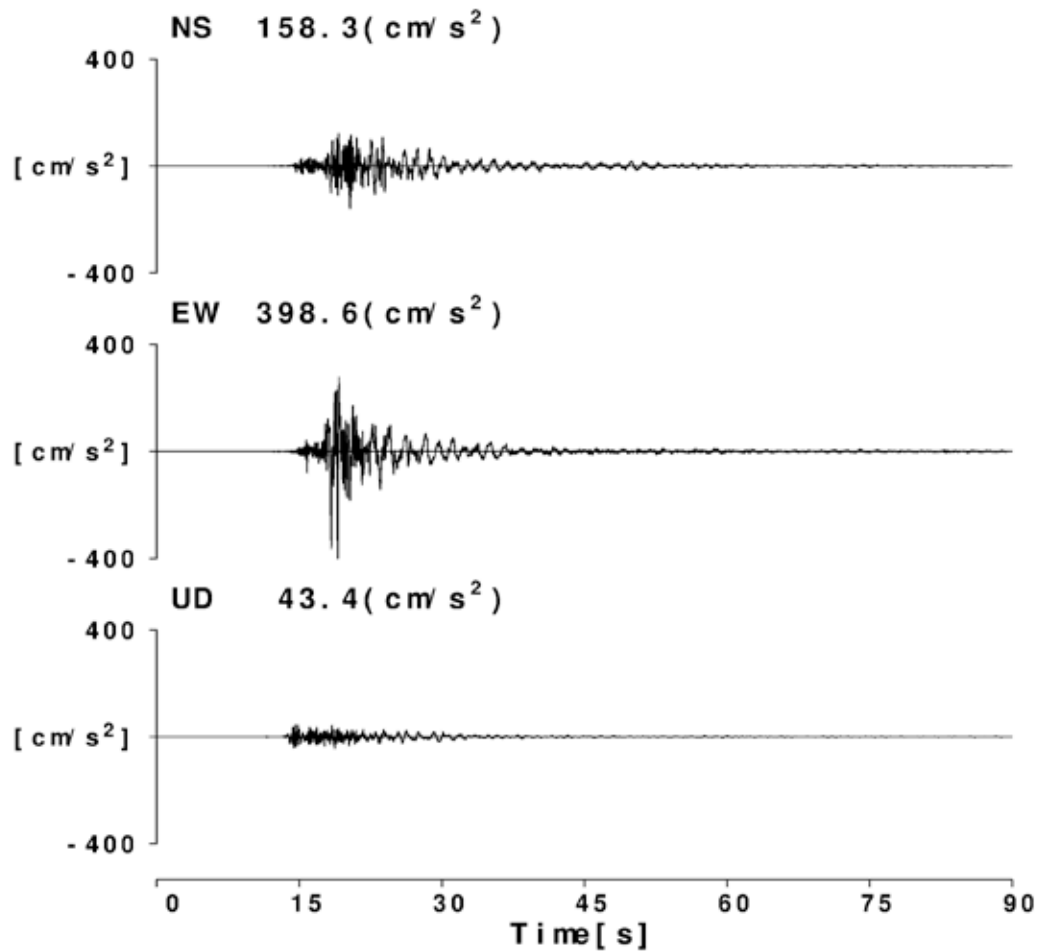
## 加茂(SMNH16)



# 気象庁

## 境港市東本町(47742)

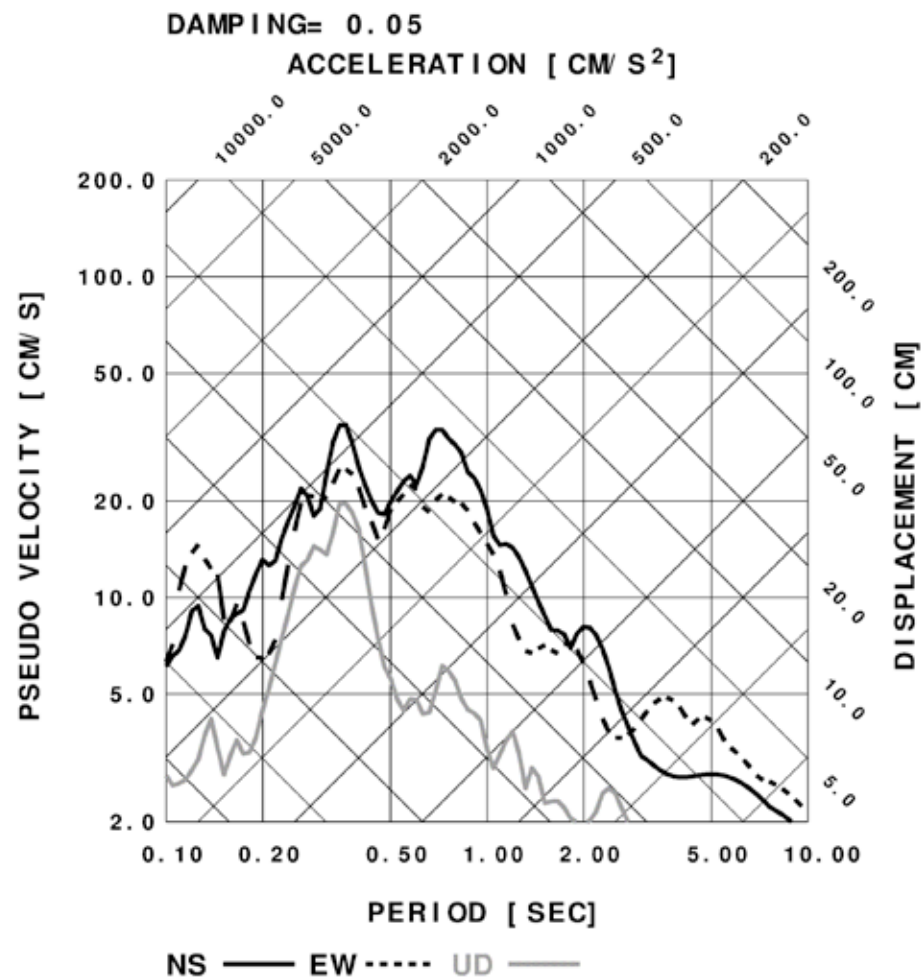
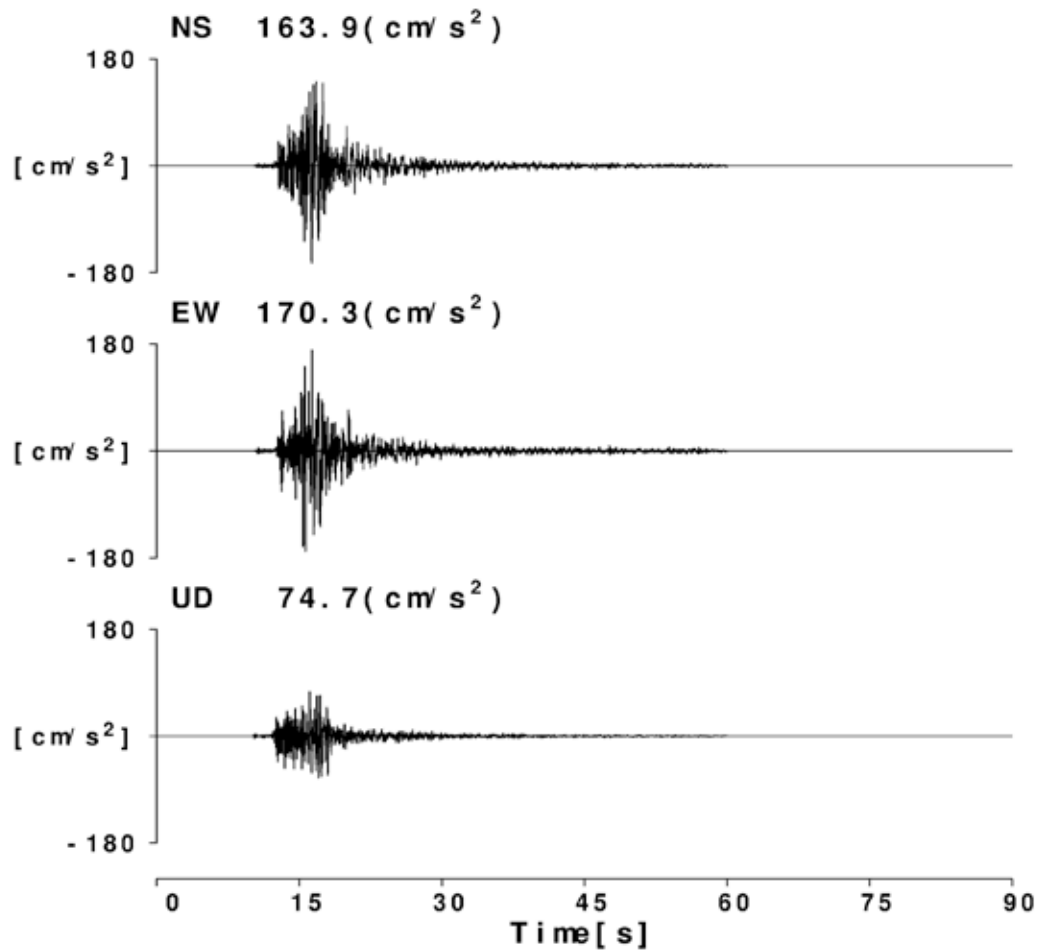
J4774226010610.18 5H[5.3]



# 気象庁

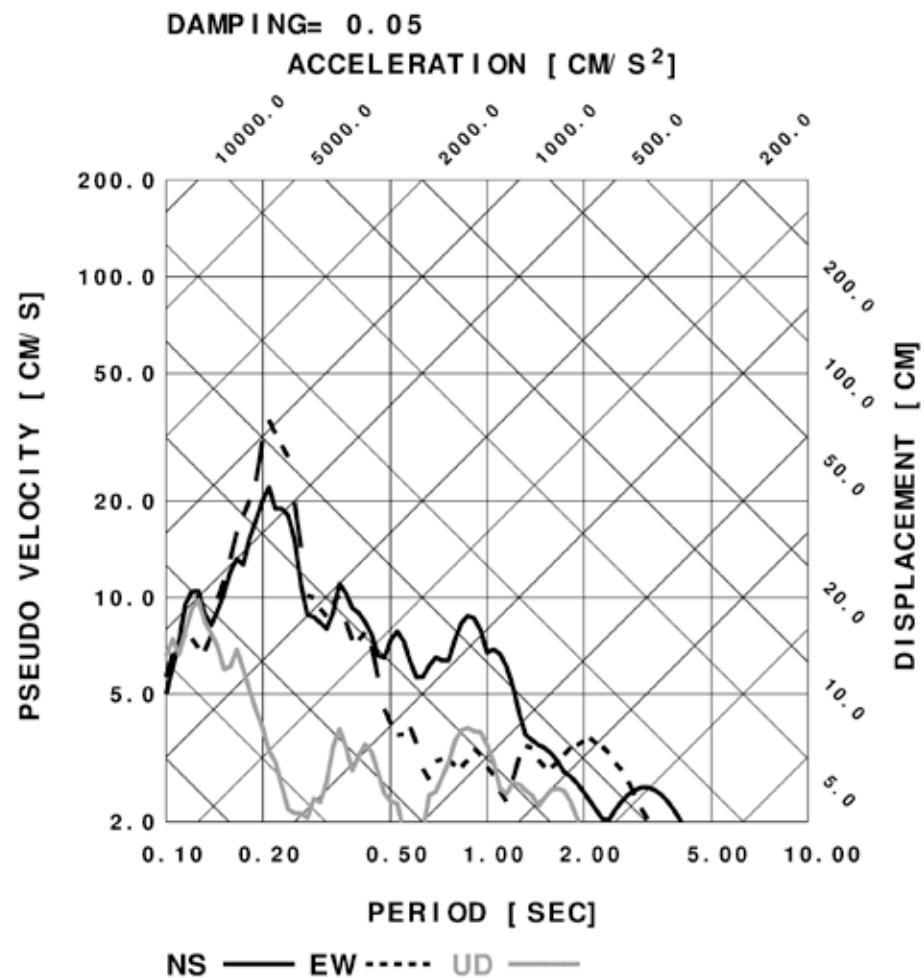
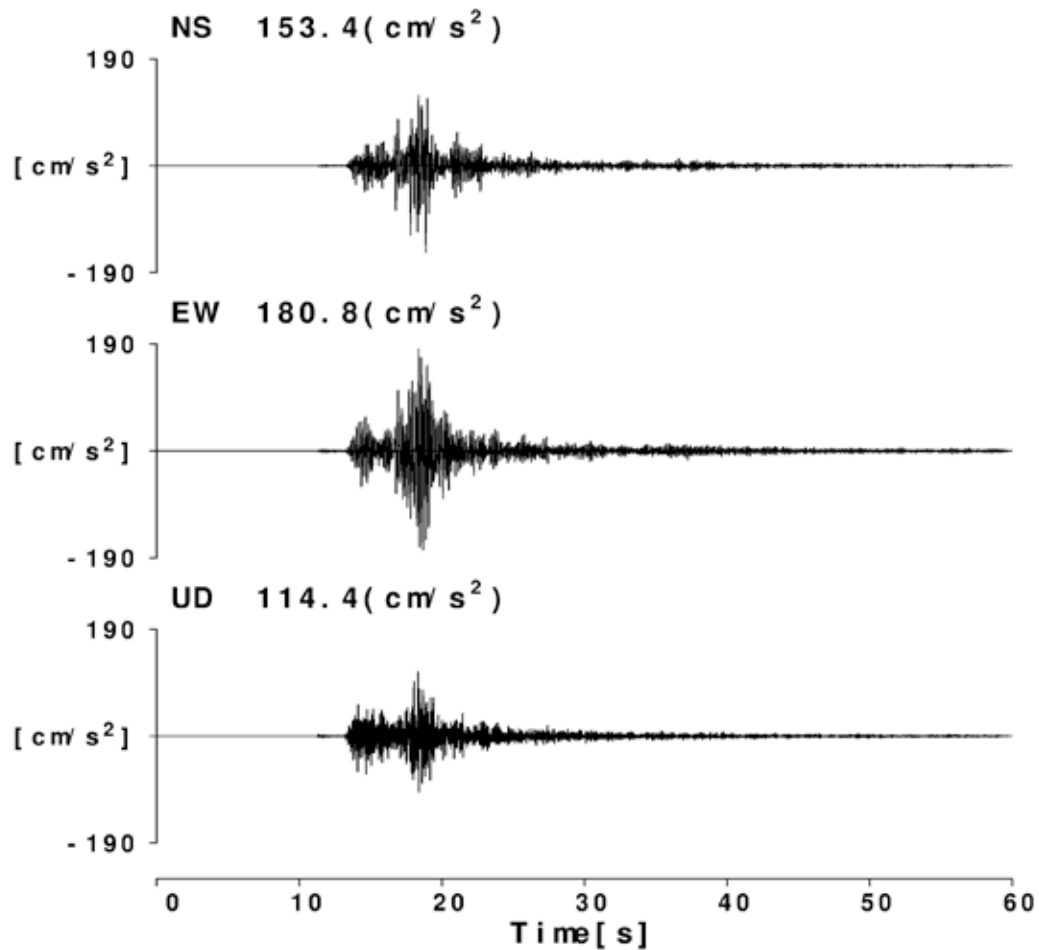
## 米子市博労町(47744)

J4774426010610.18 5L[4.7]



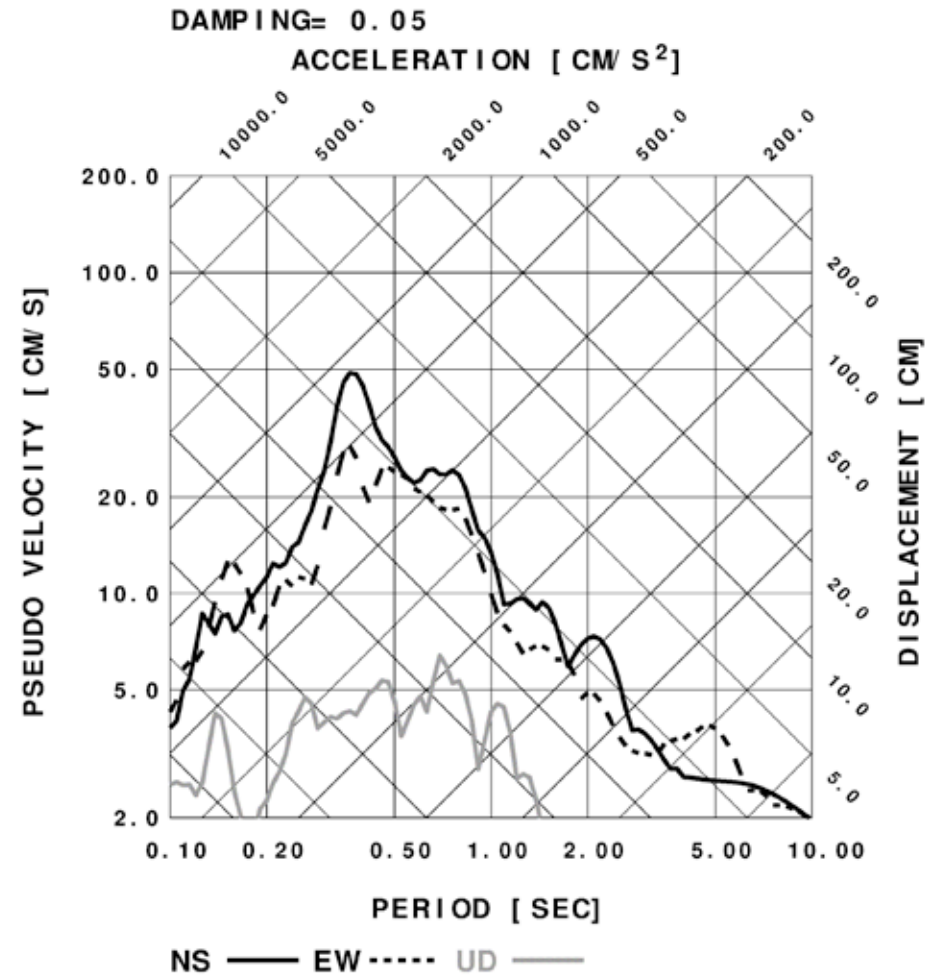
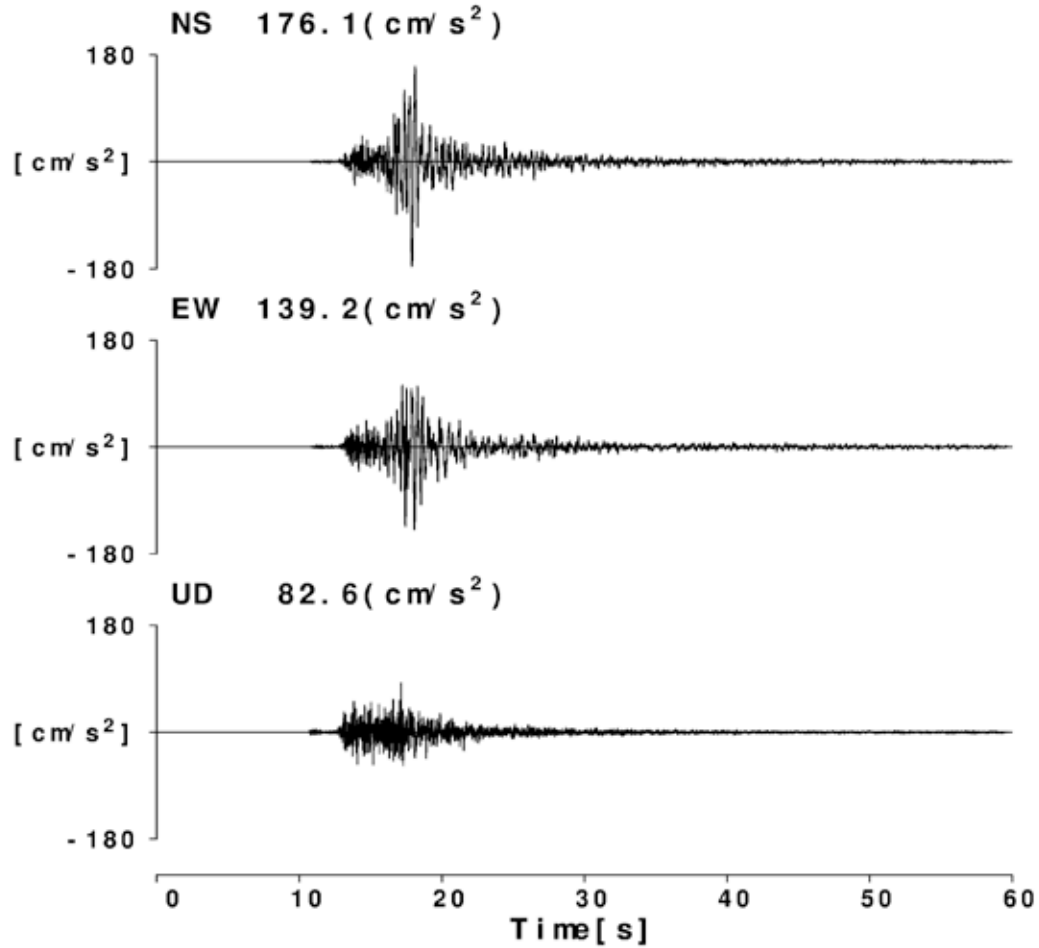
# 鳥取県：江府町江尾

(0314031) Lat. =35.2757, Lon. =133.4789  
TPFEBI2601061018 4 [4.5]



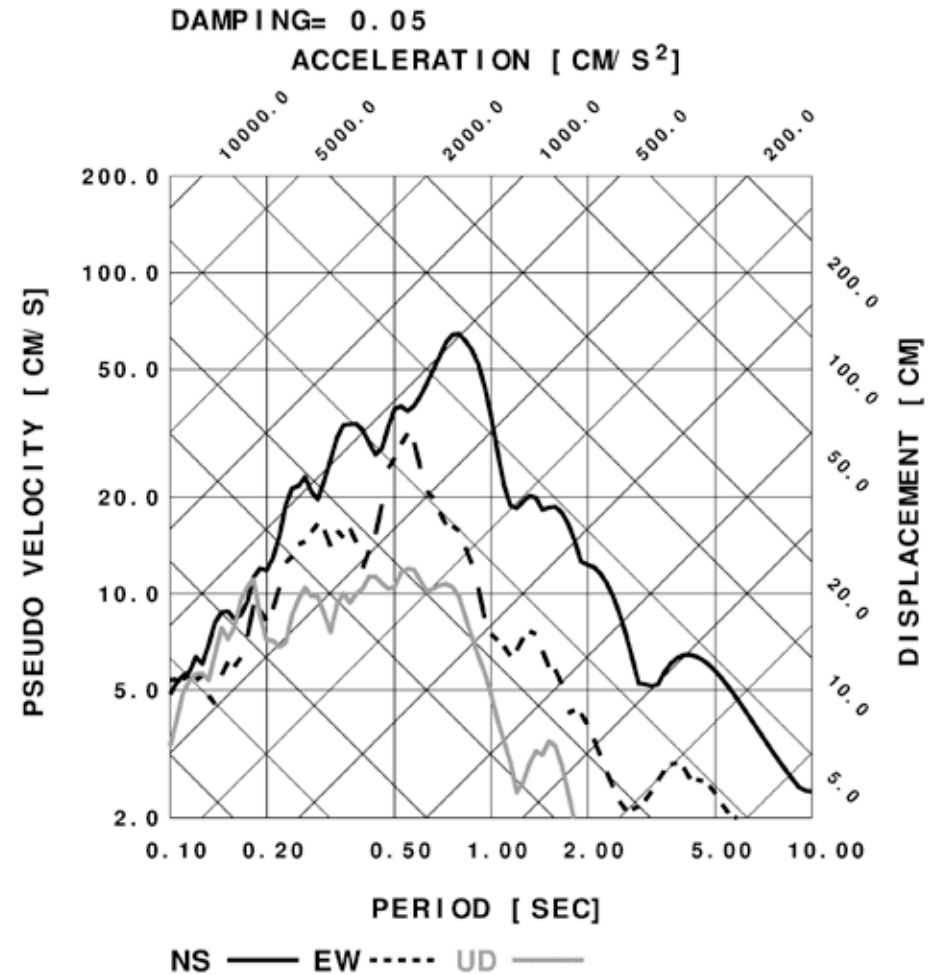
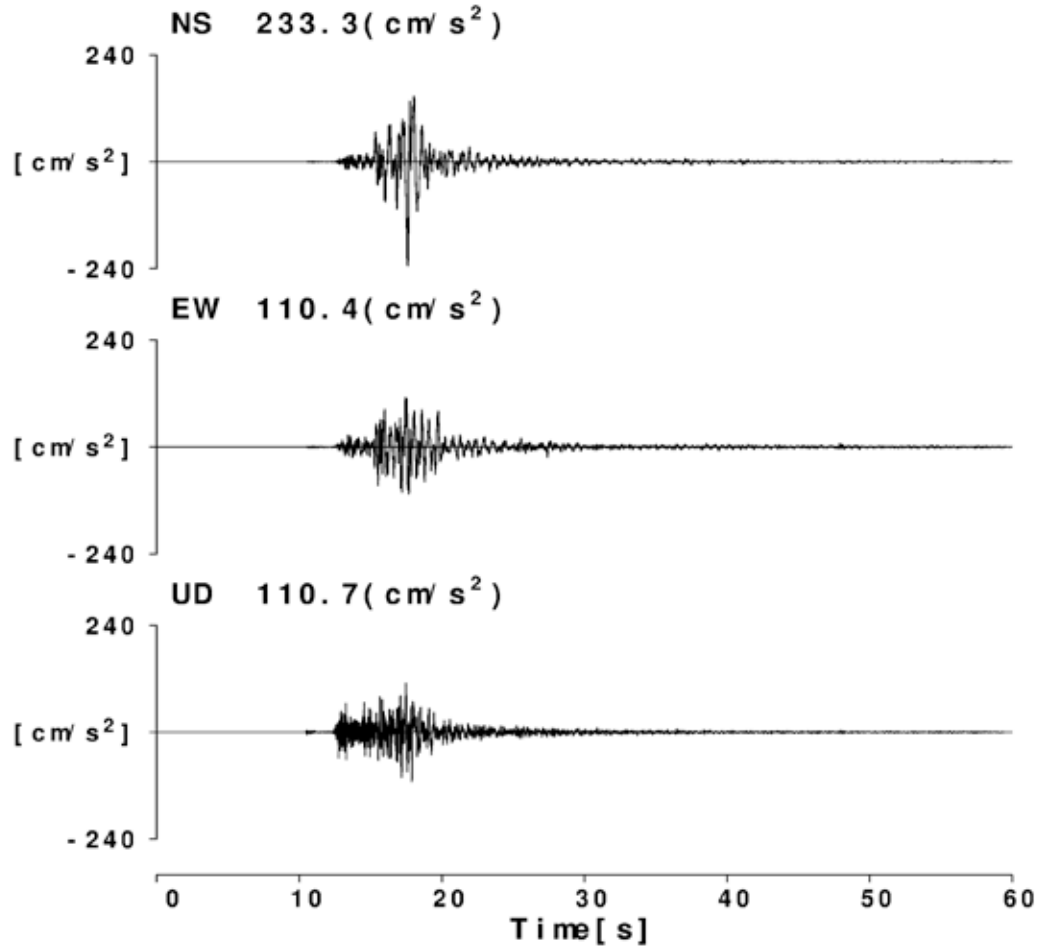
# 鳥取県：日吉津村日吉津

(0313841) Lat. =35.4399, Lon. =133.3803  
TPFHEZ2601061018 5L[4.7]



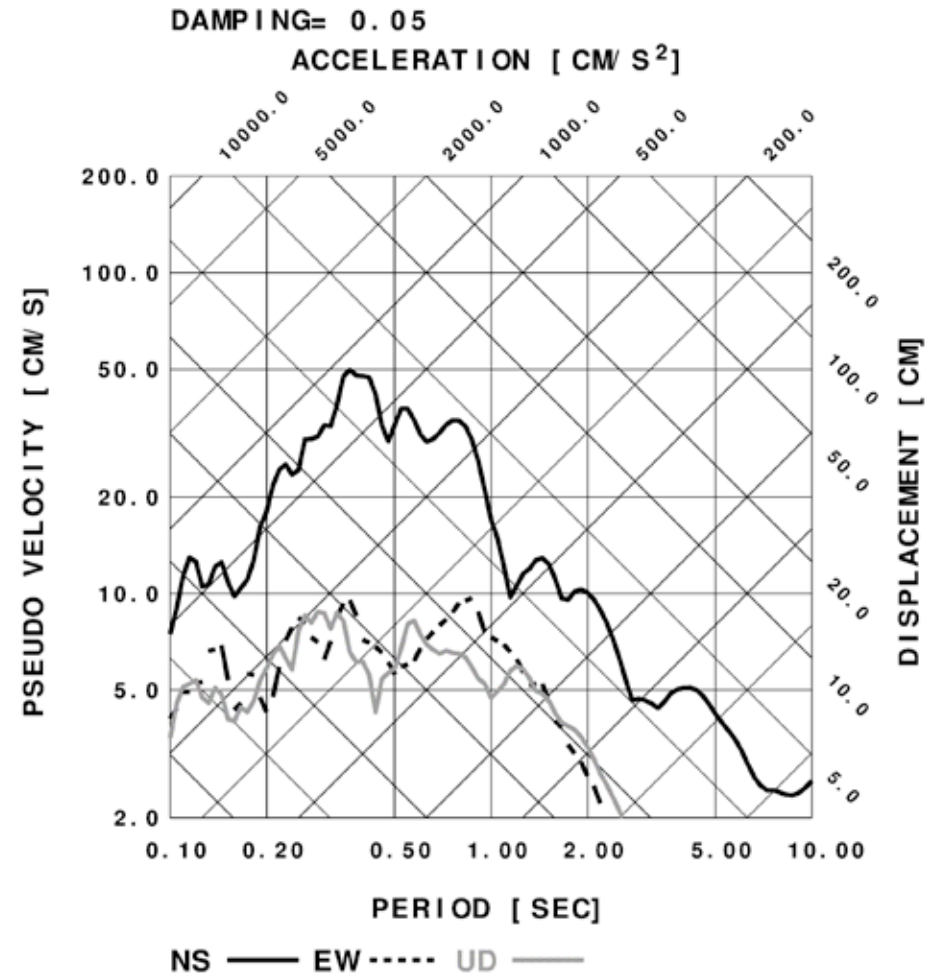
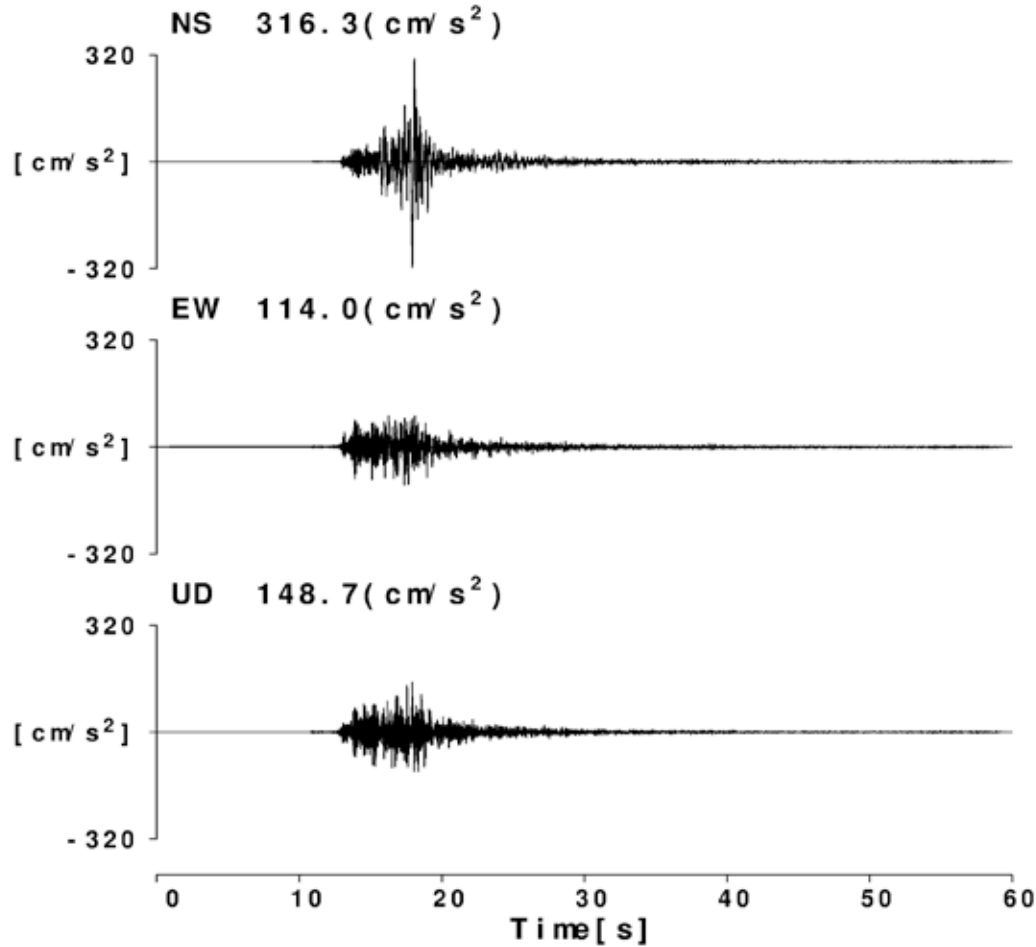
# 鳥取県：伯耆町吉長

(0313831) Lat. =35.3849, Lon. =133.4074  
TPFHOK2601061018 5L[4.9]



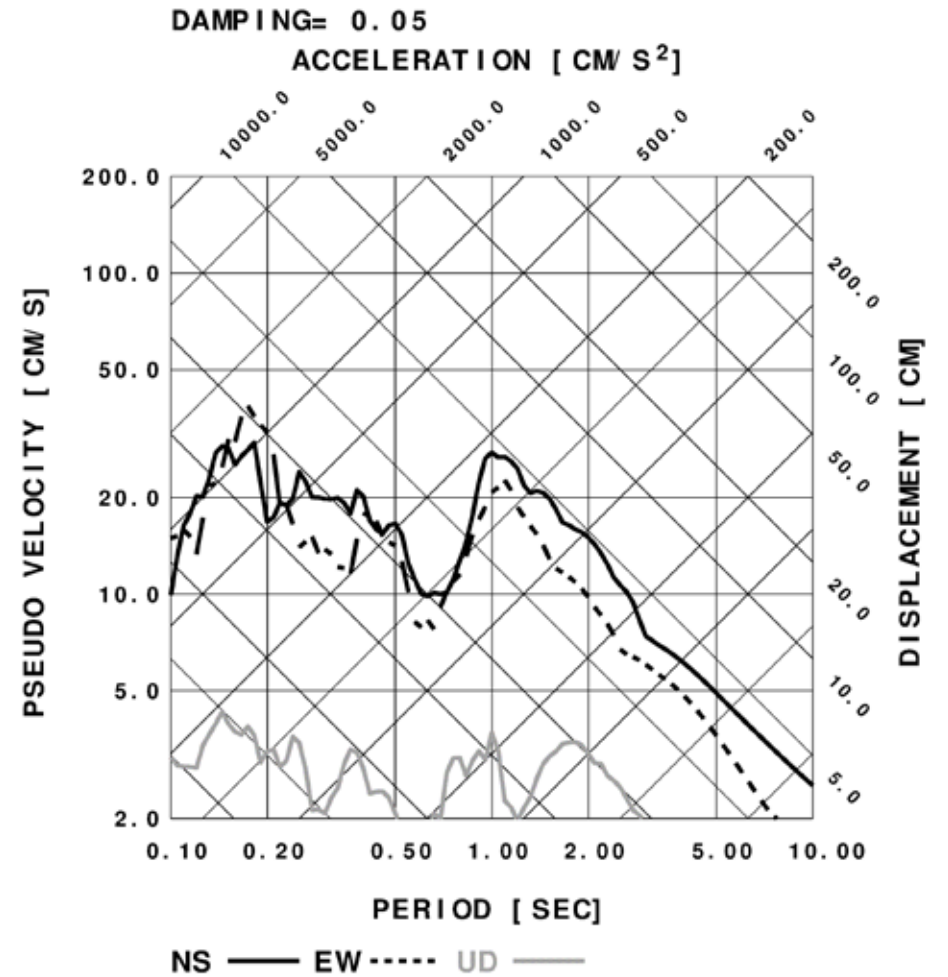
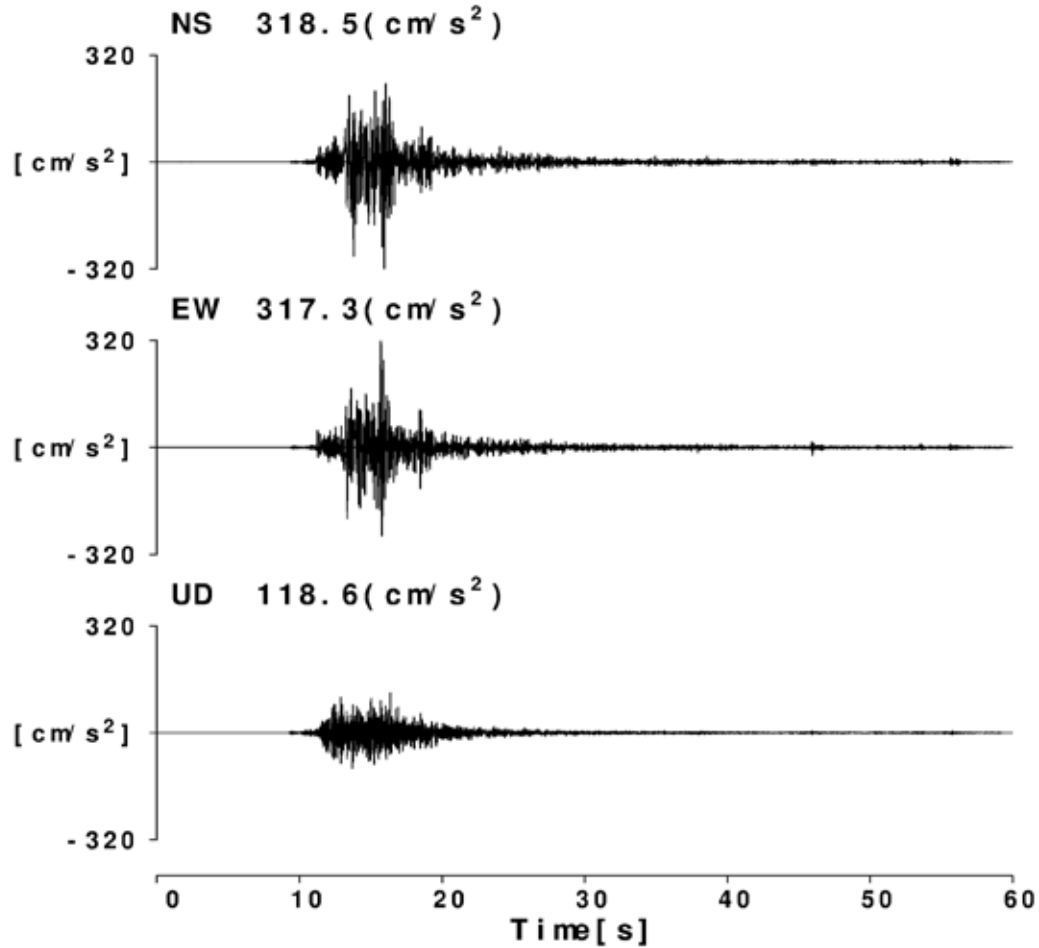
# 鳥取県：伯耆町溝口

(0314041) Lat. =35.3457, Lon. =133.4361  
TPFMZG2601061018 5L[4.5]



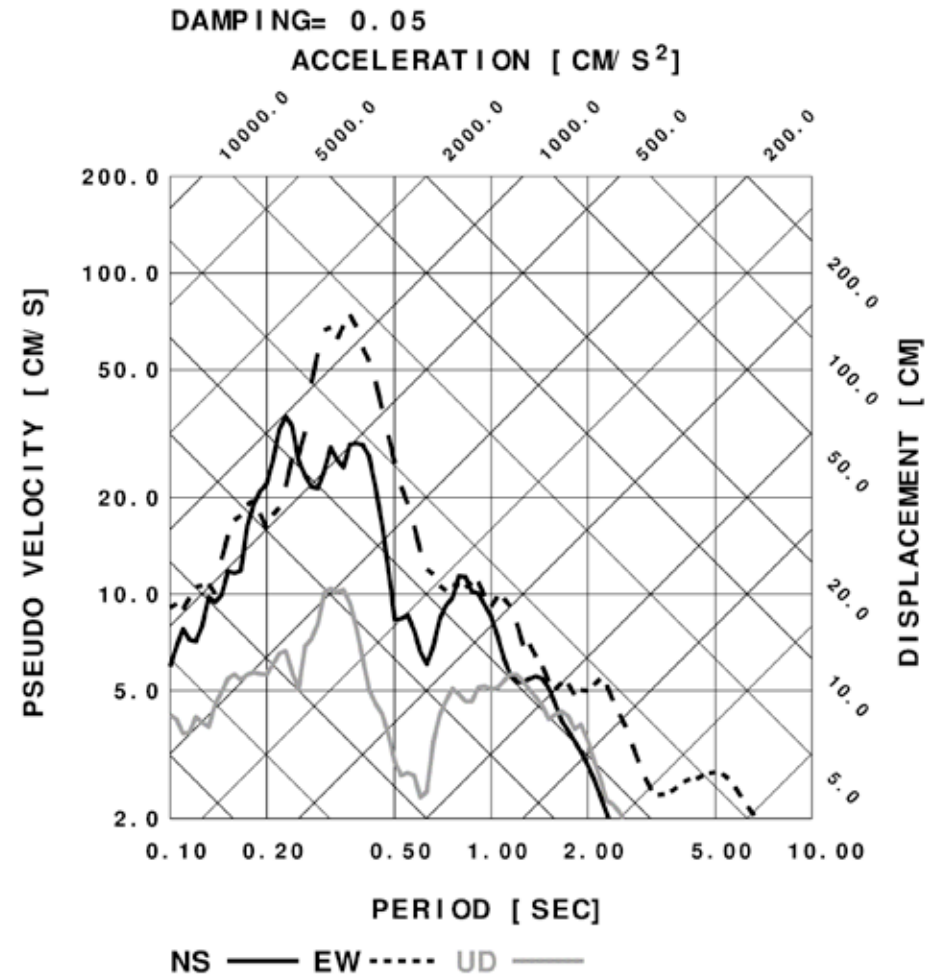
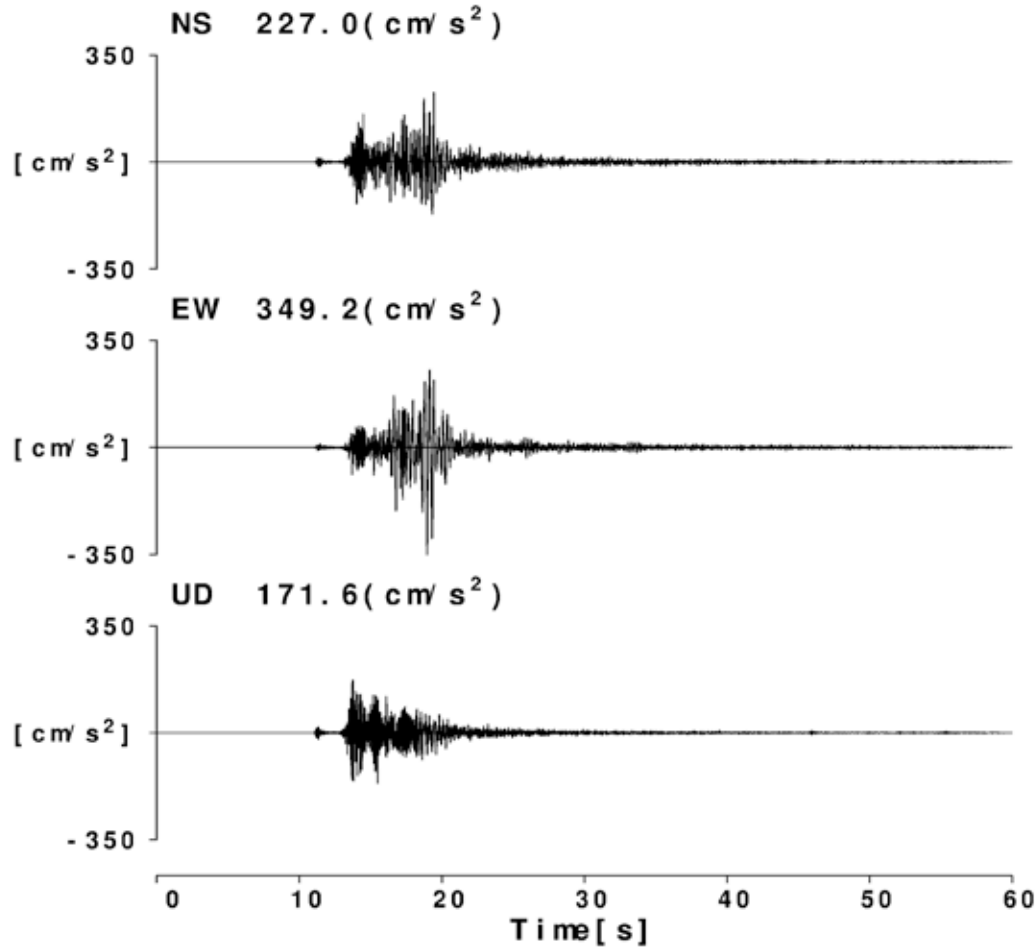
# 鳥取県：南部町法勝寺

(1120260) Lat. =35.3400, Lon. =133.3266  
TPFHSJ2601061018 5L[4.8]



# 鳥取県：日野町根雨

(0314021) Lat. =35.2411, Lon. =133.4428  
TPFNEU2601061018 5H[5.1]



# 鳥取県：米子市淀江町

(0313851) Lat. =35.4525, Lon. =133.4189  
TPFYDE2601061018 5L[4.7]

